

Anti-Collagen XI alpha COL11A1 Antibody

Catalog Number: A02909

About COL11A1

May play an important role in fibrillogenesis by controlling lateral growth of collagen II fibrils.

Yoshioka H., J. Biol. Chem. 265:6423-6426(1990).

Annunen S., Am. J. Hum. Genet. 65:974-983(1999).

Zhidkova N.I., J. Biol. Chem. 270:9486-9493(1995).

Overview

Product Name	Anti-Collagen XI alpha COL11A1 Antibody
Reactive Species	Human, Mouse
Description	Boster Bio Anti-Collagen XI alpha COL11A1 Antibody (Catalog # A02909). Tested in WB applications. This antibody reacts with Human, Mouse.
Application	WB
Clonality	Polyclonal
Formulation	Rabbit IgG in phosphate buffered saline (without Mg ²⁺ and Ca ²⁺), pH 7.4, 150mM NaCl, 0.02% sodium azide and 50% glycerol.
Storage Instructions	Store at -20°C for one year. For short term storage and frequent use, store at 4°C for up to one month. Avoid repeated freeze-thaw cycles.
Host	Rabbit
Uniprot ID	P12107

Technical Details

Immunogen	Synthesized peptide derived from internal of human Collagen XI alpha1.
Predicted Reactive Species	Boar, Bovine, Canine, Golden Hamster
Isotype	IgG
Form	Liquid
Concentration	1 mg/ml
Purification	The antibody was affinity-purified from rabbit antiserum by affinity-chromatography using epitope-specific immunogen.
Suggested Dilutions	Dilute the sample so that the expected range of concentrations fall within the detection range of this

kit.

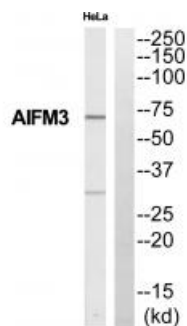
If the expected range of concentration is unknown, a pilot test should be conducted to decide the optimal dilution ratio for your samples.

Some PubMed article(s) citing the expression level of this target are as follows:

Boster Bio's internal QC testing used:

Western blotting: 1:500~1:3000

Anti-Collagen XI alpha COL11A1 Antibody (A02909) Images



Submit a product review to Biocompare.com

Submit a review of this product to Biocompare.com to receive a \$20 Amazon.com giftcard! Your reviews help your fellow scientists make the right decisions. Thank you for your contribution.



Anti-Collagen XI alpha COL11A1 Antibody