

Anti-Cul7/Cullin 7 Antibody

Catalog Number: A03179

About CUL7

Cullins assemble a potentially large number of ubiquitin ligases by binding to the RING protein ROC1 to catalyse polyubiquitination, as well as binding to various specificity factors to recruit substrates. Cullin 7 is a component of E3 ubiquitin ligase complexes, which mediate the ubiquitination and subsequent proteasomal degradation of target proteins. Cullin 7 seems to be involved proteasomal degradation of proteins involved in endothelial proliferation and/or differentiation. Cullin 7 is part of a SCF-like complex consisting of CUL7, RBX1, SKP1, FBXW8 and GLMN isoform 1. Cullin 7 interacts with a complex of SKP1 and FBXW8, but not with SKP1 alone.

Overview

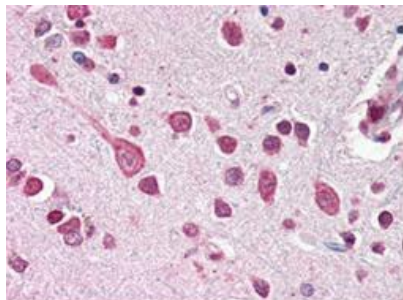
Product Name	Anti-Cul7/Cullin 7 Antibody
Reactive Species	Human
Description	Boster Bio Anti-Cul7/Cullin 7 Antibody (Catalog # A03179). Tested in IHC, IP, WB applications. This antibody reacts with Human.
Application	IP, IHC, WB
Clonality	Polyclonal 1A4
Formulation	0.01% (w/v) Sodium Azide
Storage Instructions	Store vial at -20°C prior to opening. Aliquot contents and freeze at -20°C or below for extended storage. Avoid cycles of freezing and thawing. Centrifuge product if not completely clear after standing at room temperature. This product is stable for several weeks at 4°C as an undiluted liquid. Dilute only prior to immediate use. Expiration date is one (1) year from date of opening. (Ship on dry ice.)
Host	Rabbit
Uniprot ID	Q14999

Technical Details

Immunogen	This antibody was prepared from whole rabbit serum produced by repeated immunizations with a synthetic peptide corresponding to the C-Terminus region near amino acids 1675-1698 of Human Cul7 coupled to KLH.
Predicted Reactive Species	Canine, Guinea Pig, Rabbit
Isotype	Antiserum
Form	Liquid (sterile filtered)
Concentration	85 mg/mL by Refractometry

Purification	This product is monospecific antiserum processed by delipidation and defibrination followed by sterile filtration. This product reacts with human and mouse Cullin 7. Cross-reactivity with other human cullins may occur.
Suggested Dilutions	<p>Dilute the sample so that the expected range of concentrations fall within the detection range of this kit.</p> <p>If the expected range of concentration is unknown, a pilot test should be conducted to decide the optimal dilution ratio for your samples.</p> <p>Some PubMed article(s) citing the expression level of this target are as follows:</p> <p>Boster Bio's internal QC testing used:</p> <p>ELISA: 1:2,000 - 1:10,000</p> <p>IHC: User optimized</p> <p>IP: User optimized</p> <p>WB: 1:500 - 1:1,000</p>

Anti-Cul7/Cullin 7 Antibody (A03179) Images



CUL7 was detected in paraffin-embedded sections of human brain cortex tissues using rabbit anti-CUL7 Antiserum, not purified polyclonal antibody (Catalog # A03179) at 1:500. The immunohistochemical section was developed using SABC method (Catalog # SA1022).

Submit a product review to Biocompare.com

Submit a review of this product to Biocompare.com to receive a \$20 Amazon.com giftcard! Your reviews help your fellow scientists make the right decisions. Thank you for your contribution.



Anti-Cul7/Cullin 7 Antibody