

## Anti-GLUT3 SLC2A3 Antibody

Catalog Number: A03259

### About SLC2A3

Facilitative glucose transporter. Probably a neuronal glucose transporter.

B. Rachele Merriman-Smith, Invest. Ophthalmol. Vis. Sci., Aug 2003; 44: 3458.

S. Hauguel-de Mouzon, J. Clin. Endocrinol. Metab., Aug 1997; 82: 2689 - 2694.

Bo-Chul Shin, Endocrinology, Sep 1997; 138: 3997.

S Nagamatsu, J. Biol. Chem., Jan 1992; 267: 467

### Overview

Product Name	Anti-GLUT3 SLC2A3 Antibody
Reactive Species	Human
Description	Boster Bio Anti-GLUT3 SLC2A3 Antibody (Catalog # A03259). Tested in WB, IHC, IF/ICC, ELISA applications. This antibody reacts with Human.
Application	ELISA, IF, IHC, ICC, WB
Clonality	Polyclonal
Formulation	Rabbit IgG in phosphate buffered saline (without Mg <sup>2+</sup> and Ca <sup>2+</sup> ), pH 7.4, 150mM NaCl, 0.02% sodium azide and 50% glycerol.
Storage Instructions	Store at -20°C for one year. For short term storage and frequent use, store at 4°C for up to one month. Avoid repeated freeze-thaw cycles.
Host	Rabbit
Uniprot ID	P11169

### Technical Details

Immunogen	Synthesized peptide derived from human GLUT3.
Predicted Reactive Species	Boar, Bovine, Canine, Golden Hamster
Isotype	IgG
Form	Liquid
Concentration	1 mg/ml
Purification	The antibody was affinity-purified from rabbit antiserum by affinity-chromatography using epitope-specific immunogen.

**Suggested Dilutions**

Dilute the sample so that the expected range of concentrations fall within the detection range of this kit.

If the expected range of concentration is unknown, a pilot test should be conducted to decide the optimal dilution ratio for your samples.

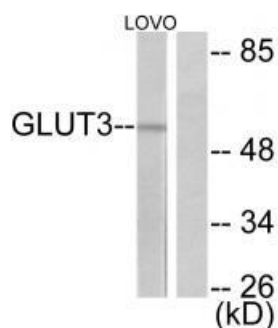
Some PubMed article(s) citing the expression level of this target are as follows:

Boster Bio's internal QC testing used:

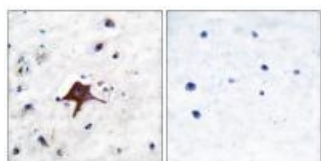
Western blotting: 1:500~1:3000

Immunohistochemistry: 1:50~1:100 IF/ICC 1:100-1:500 ELISA(peptide) 1:20000-1:40000

## Anti-GLUT3 SLC2A3 Antibody (A03259) Images



Western blot analysis of extracts from LOVO cells, using GLUT3 antibody A03259.



Immunohistochemical analysis of paraffin-embedded human brain tissue using GLUT3 antibody A03259.

## Submit a product review to Biocompare.com

Submit a review of this product to Biocompare.com to receive a \$20 Amazon.com giftcard! Your reviews help your fellow scientists make the right decisions. Thank you for your contribution.



Anti-GLUT3 SLC2A3 Antibody