

Anti-TEF-1 TEAD1 Antibody

Catalog Number: A03263

About TEAD1

Facilitative glucose transporter. Probably a neuronal glucose transporter.

B. Rachele Merriman-Smith, Invest. Ophthalmol. Vis. Sci., Aug 2003; 44: 3458.

S. Hauguel-de Mouzon, J. Clin. Endocrinol. Metab., Aug 1997; 82: 2689 - 2694.

Bo-Chul Shin, Endocrinology, Sep 1997; 138: 3997.

S Nagamatsu, J. Biol. Chem., Jan 1992; 267: 467

Overview

Product Name	Anti-TEF-1 TEAD1 Antibody
Reactive Species	Human, Mouse, Rat
Description	Boster Bio Anti-TEF-1 TEAD1 Antibody catalog # A03263. Tested in WB,IHC,ICC/IF,ChIP applications. This antibody reacts with Human,Mouse,Rat.
Application	ChIP, IF, IHC, ICC, WB
Clonality	Polyclonal
Formulation	Rabbit IgG, 1mg/ml in PBS with 0.02% sodium azide, 50% glycerol, pH7.2
Storage Instructions	Store at -20°C for one year. For short term storage and frequent use, store at 4°C for up to one month. Avoid repeated freeze-thaw cycles.
Host	Rabbit
Uniprot ID	P28347

Technical Details

Immunogen	Synthesized peptide derived from human Claudin-5 around the phosphorylation site of Y217.
Predicted Reactive Species	Boar, Bovine, Canine, Golden Hamster
Isotype	IgG
Form	Liquid
Concentration	1 mg/ml
Purification	The antibody was affinity-purified from rabbit antiserum by affinity-chromatography using epitope-specific immunogen and the purity is > 95% (by SDS-PAGE).

Suggested Dilutions

Dilute the sample so that the expected range of concentrations fall within the detection range of this kit.

If the expected range of concentration is unknown, a pilot test should be conducted to decide the optimal dilution ratio for your samples.

Some PubMed article(s) citing the expression level of this target are as follows:

Boster Bio's internal QC testing used:

WB: 1:500-1:2000

IHC: 1:50-1:200

ICC/IF: 1:50-1:200

ChIP: 1:20-1:50

Anti-TEF-1 TEAD1 Antibody (A03263) Images

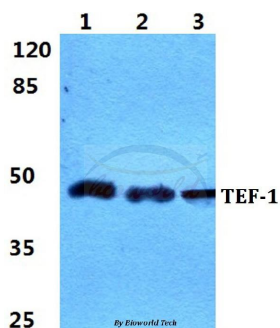


Figure 1. Western blotting validation for Anti-TEF-1 TEAD1 Antibody A03263

Western blot (WB) analysis of TEF-1 polyclonal antibody at 1:500 dilution

Lane1:MCF-7 cell lysate

Lane2:Raw264.7 cell lysate

Lane3:PC12 cell lysate

Electrophoresis was performed on a SDS-PAGE gel. To determine SDS-PAGE gel concentration

Submit a product review to Biocompare.com

Submit a review of this product to Biocompare.com to receive a \$20 Amazon.com giftcard! Your reviews help your fellow scientists make the right decisions. Thank you for your contribution.



Anti-TEF-1 TEAD1 Antibody