

Anti-Ajuba Antibody

Catalog Number: A03320

About AJUBA

Human AJUBA (also called JUB protein and ajuba homolog isoform 1) is a LIM domain protein suggested to bind and regulate the activity of Aurora A. Aurora A, which is involved in cell cycle regulation, is upregulated during mitosis, localizing to the centrosomes and microtubule regions proximal to the centrosomes.

Overview

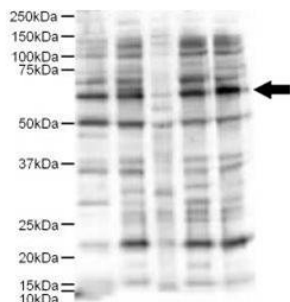
Product Name	Anti-Ajuba Antibody
Reactive Species	Human
Description	Boster Bio Anti-Ajuba Antibody (Catalog # A03320). Tested in ELISA, WB applications. This antibody reacts with Human.
Conjugate	HRP
Application	ELISA, WB
Clonality	Polyclonal
Formulation	0.02 M Potassium Phosphate, 0.15 M Sodium Chloride, pH 7.2, 0.01% (w/v) Sodium Azide
Storage Instructions	Store vial at -20°C prior to opening. Aliquot contents and freeze at -20°C or below for extended storage. Avoid cycles of freezing and thawing. Centrifuge product if not completely clear after standing at room temperature. This product is stable for several weeks at 4°C as an undiluted liquid. Dilute only prior to immediate use. Expiration date is one (1) year from date of opening. (Ship on dry ice.)
Host	Rabbit
Uniprot ID	Q96IF1

Technical Details

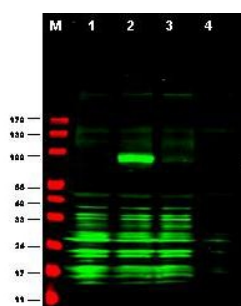
Immunogen	This affinity purified antibody was prepared from whole rabbit serum produced by repeated immunizations with a synthetic peptide corresponding aa 224-239 of Human Ajuba.
Predicted Reactive Species	Bovine, Pufferfish, Zebrafish
Isotype	IgG
Form	Liquid (sterile filtered)
Concentration	1.67 mg/mL by UV absorbance at 280 nm
Purification	This affinity purified antibody is directed against human Ajuba. The product was affinity purified

	from antiserum by immunoaffinity purification. A BLAST analysis was used to suggest reactivity with this protein from human, rat, dog, mouse and chimpanzee based on 100% homology for the immunogen sequence. Cross-reactivity with Ajuba protein homologues from other sources has not been determined.
Suggested Dilutions	<p>Dilute the sample so that the expected range of concentrations fall within the detection range of this kit.</p> <p>If the expected range of concentration is unknown, a pilot test should be conducted to decide the optimal dilution ratio for your samples.</p> <p>Some PubMed article(s) citing the expression level of this target are as follows:</p> <p>Boster Bio's internal QC testing used:</p> <p>ELISA: 1:20,000 - 1:80,000</p> <p>IP: 1:100</p> <p>WB: 1:500 - 1:2,500</p>

Anti-Ajuba Antibody (A03320) Images



Western blot analysis of Ajuba expression in 1) HeLa nuclear extract, and 2) HeLa, 3) A431, 4) Jurkat and 5) 293 whole cell lysates. Ajuba at 57KD was detected using rabbit anti-Ajuba Antigen Affinity purified polyclonal antibody (Catalog # A03320) at 1:500. Personal Communication. E. Pugacheva, Fox Chase Cancer Center, Phila, PA.



Western blot analysis of Ajuba expression in Ajuba-RFP fusion protein in cell lysates (arrow-head). Lanes correspond to 1) vector only transfection, 2) human Ajuba-RFP, 3) mouse Ajuba-RFP, and 4) mock transfection. Ajuba was detected using rabbit anti-Ajuba Antigen Affinity purified polyclonal antibody (Catalog # A03320) at 1:1700. The blot was developed using chemiluminescence (ECL) method (Catalog # EK1002).

Submit a product review to Biocompare.com

Submit a review of this product to Biocompare.com to receive a \$20 Amazon.com giftcard! Your reviews help your fellow scientists make the right decisions. Thank you for your contribution.



Anti-Ajuba Antibody