

Anti-Keratin 16 KRT16 Antibody

Catalog Number: A03393

About KRT16

The protein encoded by this gene is a member of the keratin gene family. The keratins are intermediate filament proteins responsible for the structural integrity of epithelial cells and are subdivided into cytokeratins and hair keratins. Most of the type I cytokeratins consist of acidic proteins which are arranged in pairs of heterotypic keratin chains and are clustered in a region of chromosome 17q12-q21. This keratin has been coexpressed with keratin 14 in a number of epithelial tissues, including esophagus, tongue, and hair follicles. Mutations in this gene are associated with type 1 pachyonychia congenita, non-epidermolytic palmoplantar keratoderma and unilateral palmoplantar verrucous nevus.

Qian Wang, J. Virol., Jan 2004; 78: 821 - 833. RD Paladini,
RD Paladini, J. Cell Biol., Feb 1996; 132: 381.
M.K. Shamsheer, Hum. Mol. Genet., Oct 1995; 4: 1875 - 1881.
Ying-Nai Wang, Mol. Pharmacol., Jan 2006; 69: 85 - 98.

Overview

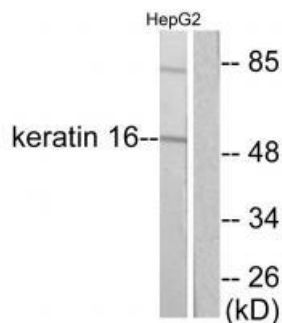
Product Name	Anti-Keratin 16 KRT16 Antibody
Reactive Species	Human, Mouse, Rat
Description	Boster Bio Anti-Keratin 16 KRT16 Antibody (Catalog # A03393). Tested in WB, IHC applications. This antibody reacts with Human, Mouse, Rat.
Application	IHC, WB
Clonality	Polyclonal
Formulation	Rabbit IgG in phosphate buffered saline (without Mg ²⁺ and Ca ²⁺), pH 7.4, 150mM NaCl, 0.02% sodium azide and 50% glycerol.
Storage Instructions	Store at -20°C for one year. For short term storage and frequent use, store at 4°C for up to one month. Avoid repeated freeze-thaw cycles.
Host	Rabbit
Uniprot ID	P08779

Technical Details

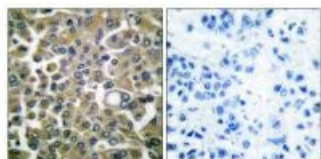
Immunogen	Synthesized peptide derived from human Keratin 16.
Predicted Reactive Species	Boar, Bovine, Canine, Golden Hamster
Isotype	IgG
Form	Liquid

Concentration	1 mg/ml
Purification	The antibody was affinity-purified from rabbit antiserum by affinity-chromatography using epitope-specific immunogen.
Suggested Dilutions	<p>Dilute the sample so that the expected range of concentrations fall within the detection range of this kit.</p> <p>If the expected range of concentration is unknown, a pilot test should be conducted to decide the optimal dilution ratio for your samples.</p> <p>Some PubMed article(s) citing the expression level of this target are as follows:</p> <p>Boster Bio's internal QC testing used:</p> <p>Western blotting: 1:500~1:3000</p> <p>Immunohistochemistry: 1:50~1:100</p>

Anti-Keratin 16 KRT16 Antibody (A03393) Images



Western blot analysis of extracts from HepG2 cells, using Keratin 16 antibody A03393.



Immunohistochemical analysis of paraffin-embedded human breast carcinoma tissue using Keratin 16 antibody A03393.

Submit a product review to Biocompare.com

Submit a review of this product to Biocompare.com to receive a \$20 Amazon.com giftcard! Your reviews help your fellow scientists make the right decisions. Thank you for your contribution.



Anti-Keratin 16 KRT16 Antibody