

Anti-CARD8 (Tucan) Antibody

Catalog Number: A03404

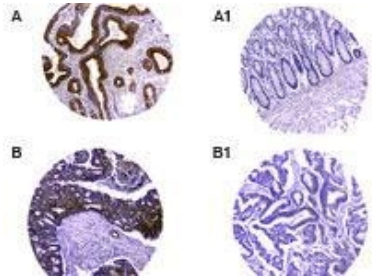
Overview

Product Name	Anti-CARD8 (Tucan) Antibody
Reactive Species	Human
Description	Boster Bio Anti-CARD8 (Tucan) Antibody (Catalog# A03404). Tested in WB, IHC, IP application(s). This antibody reacts with Human.
Application	IP, IHC, WB
Clonality	Polyclonal
Formulation	50 ul sera
Storage Instructions	Store the antibody at 4°C, stable for 6 months. For long-term storage, store at -20°C. Avoid repeated freeze and thaw cycles.
Host	Rabbit
Uniprot ID	Q9Y2G2

Technical Details

Immunogen	Full-length recombinant protein of human TUCAN (CARD8)
Predicted Reactive Species	Mouse, Rat
Isotype	Rabbit IgG
Form	Liquid
Concentration	0.5-1mg/ml, actual concentration vary by lot. Use suggested dilution ratio to decide dilution procedure.
Suggested Dilutions	<p>Dilute the sample so that the expected range of concentrations fall within the detection range of this kit.</p> <p>If the expected range of concentration is unknown, a pilot test should be conducted to decide the optimal dilution ratio for your samples.</p> <p>Some PubMed article(s) citing the expression level of this target are as follows:</p> <p>Boster Bio's internal QC testing used:</p> <p>WB: 1:1000-1:2000</p> <p>IHC (paraffin): 1:1000-1:5000</p> <p>IHC (frozen): Users should optimize</p> <p>IP: 1:50-1:200</p>

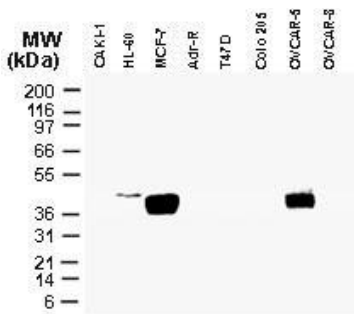
Anti-CARD8 (Tucan) Antibody (A03404) Images



Formalin-fixed, paraffin-embedded tumor/normal adjacent tissue cores from a human colon tissue microarray stained for TUCAN/CARD8 expression at 1:2000. A and B are tumor tissue cores. A1 and B1 are the matched normal adjacent cores from A and B, respectively. Hematoxylin-eosin counterstain.



Formalin-fixed, paraffin-embedded tissue human colon microarray stained for TUCAN/CARD8 expression at 1:2000. A-A2, successively higher magnifications of the microarray. A, low magnification overview. A1, differential TUCAN/CARD8 staining between tissue cores is observed. A2, Areas of intense TUCAN/CARD8 staining in a colon carcinoma tissue core. Hematoxylin eosin counterstain.



Western blot analysis of TUCAN/CARD8 in tumor cell lines using primary antibody dilution ratio of 1:2000. Cell lysates were normalized for total protein content.

Submit a product review to Biocompare.com

Submit a review of this product to Biocompare.com to receive a \$20 Amazon.com giftcard! Your reviews help your fellow scientists make the right decisions. Thank you for your contribution.



Anti-CARD8 (Tucan) Antibody