

## Anti-CRYAB/Alpha B Crystallin Antibody

Catalog Number: A03496

### About CRYAB

The laminar organization of multiple neuronal types in the cerebral cortex is required for normal cognitive function. In mice, the disabled-1 gene plays a central role in brain development, directing the migration of cortical neurons past previously formed neurons to reach their proper layer. This gene is similar to disabled-1, and the protein encoded by this gene is thought to be a signal transducer that interacts with protein kinase pathways to regulate neuronal positioning in the developing brain. Alternatively spliced transcript variants of this gene have been reported, but their full length nature has not been determined.

Kelian Chen, et.al. (2003) J. Cell Sci ; 117: 4527 - 4536.

Vera Strasser, et.al. (2004) Mol. Cell. Biol ; 24: 1378 - 1386.

Izhar Ben-Shlomo, et.al. (2003) Sci. STKE ; 2003: 9.

H. M. Kim, et.al. (2002) PNAS ; 99: 4020.

### Overview

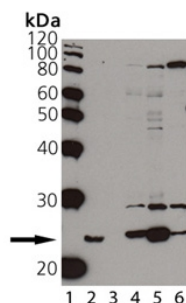
Product Name	Anti-CRYAB/Alpha B Crystallin Antibody
Reactive Species	Bovine, Mouse, Rat, Sheep, Porcine
Description	Boster Bio Anti-CRYAB/Alpha B Crystallin Antibody catalog # A03496. Tested in WB, IP applications. This antibody reacts with Mouse, Rat, Bovine, Porcine, Sheep.
Application	IP, WB
Clonality	Polyclonal
Formulation	In sodium phosphate buffer, pH 7.0, containing 0.1% sodium azide, 3% BSA, and 50% glycerol.
Storage Instructions	Store at -20°C for one year. For short term storage and frequent use, store at 4°C for up to one month. Avoid repeated freeze-thaw cycles.
Host	Goat
Uniprot ID	P02511

### Technical Details

Immunogen	Synthetic peptide corresponding to aa 54-64 of human alphaB-crystallin phosphorylated at Ser59.
Predicted Reactive Species	Bovine, Canine, Equine, Guinea Pig, Pig, Rabbit
Cross Reactivity	No cross reactivity with other proteins.
Isotype	IgG

Form	Liquid
Concentration	This antibody's concentration is >0.5mg/ml.
Purification	Immunogen affinity purified
Suggested Dilutions	<p>Dilute the sample so that the expected range of concentrations fall within the detection range of this kit.</p> <p>If the expected range of concentration is unknown, a pilot test should be conducted to decide the optimal dilution ratio for your samples.</p> <p>Some PubMed article(s) citing the expression level of this target are as follows:</p> <p>Boster Bio's internal QC testing used:</p> <p>WB, ECL, 1:1, 000</p> <p>Suggested dilutions/conditions may not be available for all applications.</p> <p>Optimal conditions must be determined individually for each application.</p>

## Anti-CRYAB/Alpha B Crystallin Antibody (A03496) Images



Western blot analysis of Pser 59 Alpha B-Crystallin expression in MW marker (lane 1), native bovine alpha-Crystallin protein (lane 2), native bovine beta-Crystallin protein (lane 3), mouse heart extract (lane 4), rat heart extract (lane 5) and ESK-4 whole cell lysates (lane 6). Pser 59 Alpha B-Crystallin was detected using rabbit anti-Pser 59 Alpha B-Crystallin polyclonal antibody (Catalog # A03496) at 1:1000. The blot was developed using chemiluminescence (ECL) method (Catalog # EK1002).

## Submit a product review to Biocompare.com

Submit a review of this product to Biocompare.com to receive a \$20 Amazon.com giftcard! Your reviews help your fellow scientists make the right decisions. Thank you for your contribution.



Anti-CRYAB/Alpha B Crystallin Antibody