

Anti-LIM domain kinase 2 LIMK2 Antibody

Catalog Number: A03511

About LIMK2

Displays serine/threonine-specific phosphorylation of myelin basic protein and histone (MBP) in vitro.

Okano I., J. Biol. Chem. 270:31321-31330(1995).

Osada H., Biochem. Biophys. Res. Commun. 229:582-589(1996).

Collins J.E., Genome Biol. 5:RESEARCH84.1-RESEARCH84.11(2004).

Overview

Product Name	Anti-LIM domain kinase 2 LIMK2 Antibody
Reactive Species	Human, Mouse, Rat
Description	Boster Bio Anti-LIM domain kinase 2 LIMK2 Antibody (Catalog # A03511). Tested in WB, IHC, IF applications. This antibody reacts with Human, Mouse, Rat.
Application	IF, IHC, WB
Clonality	Polyclonal
Formulation	Rabbit IgG in phosphate buffered saline (without Mg ²⁺ and Ca ²⁺), pH 7.4, 150mM NaCl, 0.02% sodium azide and 50% glycerol.
Storage Instructions	Store at -20°C for one year. For short term storage and frequent use, store at 4°C for up to one month. Avoid repeated freeze-thaw cycles.
Host	Rabbit
Uniprot ID	P53671

Technical Details

Immunogen	Synthesized peptide derived from internal of human LIMK2.
Predicted Reactive Species	Boar, Bovine, Canine, Golden Hamster
Isotype	IgG
Form	Liquid
Concentration	1 mg/ml
Purification	The antibody was affinity-purified from rabbit antiserum by affinity-chromatography using epitope-specific immunogen.
Suggested Dilutions	Dilute the sample so that the expected range of concentrations fall within the detection range of this

kit.

If the expected range of concentration is unknown, a pilot test should be conducted to decide the optimal dilution ratio for your samples.

Some PubMed article(s) citing the expression level of this target are as follows:

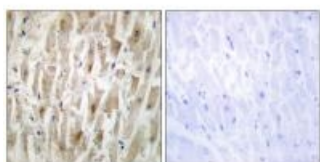
Boster Bio's internal QC testing used:

Western blotting: 1:500~1:3000

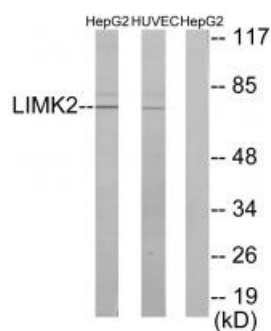
Immunohistochemistry: 1:50~1:100

Immunofluorescence: 1:100~1:500

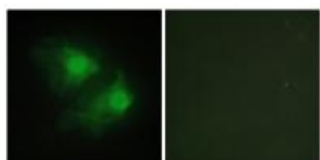
Anti-LIM domain kinase 2 LIMK2 Antibody (A03511) Images



Immunohistochemistry analysis of paraffin-embedded human heart tissue using LIMK2 antibody A03511.



Western blot analysis of extracts from HepG2 cells and HUVEC cells, using LIMK2 antibody A03511.



Immunofluorescence analysis of HeLa cells, using LIMK2 antibody A03511.

Submit a product review to Biocompare.com

Submit a review of this product to Biocompare.com to receive a \$20 Amazon.com giftcard! Your reviews help your fellow scientists make the right decisions. Thank you for your contribution.



Anti-LIM domain kinase 2 LIMK2 Antibody