

Anti-40S ribosomal protein S2 RPS2 Antibody

Catalog Number: A03548

About RPS2

Ribosomes, the organelles that catalyze protein synthesis, consist of a small 40S subunit and a large 60S subunit. Together these subunits are composed of 4 RNA species and approximately 80 structurally distinct proteins. This gene encodes a ribosomal protein that is a component of the 40S subunit. The protein belongs to the S5P family of ribosomal proteins. It is located in the cytoplasm. This gene shares sequence similarity with mouse LLRep3. It is co-transcribed with the small nucleolar RNA gene U64, which is located in its third intron. As is typical for genes encoding ribosomal proteins, there are multiple processed pseudogenes of this gene dispersed through the genome.

Slynn G., Nucleic Acids Res. 18:681-681(1990).

Ota T., Nat. Genet. 36:40-45(2004).

Mural R.J., Submitted (SEP-2005) to the EMBL/GenBank/DDBJ databases.

Overview

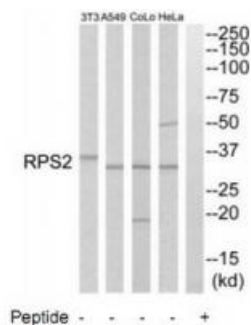
Product Name	Anti-40S ribosomal protein S2 RPS2 Antibody
Reactive Species	Human, Mouse
Description	Boster Bio Anti-40S ribosomal protein S2 RPS2 Antibody (Catalog # A03548). Tested in WB applications. This antibody reacts with Human, Mouse.
Application	WB
Clonality	Polyclonal
Formulation	Rabbit IgG in phosphate buffered saline (without Mg ²⁺ and Ca ²⁺), pH 7.4, 150mM NaCl, 0.02% sodium azide and 50% glycerol.
Storage Instructions	Store at -20°C for one year. For short term storage and frequent use, store at 4°C for up to one month. Avoid repeated freeze-thaw cycles.
Host	Rabbit
Uniprot ID	P15880

Technical Details

Immunogen	Synthesized peptide derived from C-terminal of human RPS2.
Predicted Reactive Species	Boar, Bovine, Canine, Golden Hamster
Isotype	IgG
Form	Liquid
Concentration	1 mg/ml

Purification	The antibody was affinity-purified from rabbit antiserum by affinity-chromatography using epitope-specific immunogen.
Suggested Dilutions	<p>Dilute the sample so that the expected range of concentrations fall within the detection range of this kit.</p> <p>If the expected range of concentration is unknown, a pilot test should be conducted to decide the optimal dilution ratio for your samples.</p> <p>Some PubMed article(s) citing the expression level of this target are as follows:</p> <p>Boster Bio's internal QC testing used:</p> <p>Western blotting: 1:500~1:3000</p>

Anti-40S ribosomal protein S2 RPS2 Antibody (A03548) Images



Western blot analysis of extracts from HeLa cells, A549 cells, COLO205 cells and NIH-3T3 cells, using RPS2 antibody A03548.

Submit a product review to Biocompare.com

Submit a review of this product to Biocompare.com to receive a \$20 Amazon.com giftcard! Your reviews help your fellow scientists make the right decisions. Thank you for your contribution.



Anti-40S ribosomal protein S2 RPS2 Antibody