

Anti-GRK6 Antibody

Catalog Number: A03623

About GRK6

Specifically phosphorylates the activated forms of G protein-coupled receptors. Such receptor phosphorylation initiates beta-arrestin-mediated receptor desensitization, internalization, and signaling events leading to their desensitization. Seems to be involved in the desensitization of D2-like dopamine receptors in striatum and chemokine receptor CXCR4 which is critical for CXCL12-induced cell chemotaxis. By similarity, phosphorylates rhodopsin (RHO) (in vitro) and a non G-protein-coupled receptor: LRP6 during Wnt signaling (in vitro).

Benovic J.L., J. Biol. Chem. 268:19521-19527(1993).

Haribabu B., Proc. Natl. Acad. Sci. U.S.A. 90:9398-9402(1993).

Stoffel R.H., J. Biol. Chem. 269:27791-27794(1994).

Overview

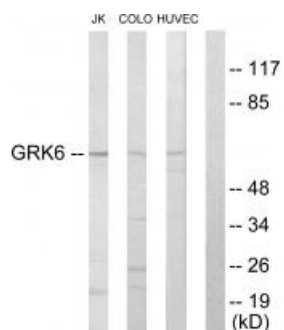
Product Name	Anti-GRK6 Antibody
Reactive Species	Human, Mouse, Rat
Description	Boster Bio Anti-GRK6 Antibody (Catalog # A03623). Tested in WB, IF applications. This antibody reacts with Human, Mouse, Rat.
Application	IF, WB
Clonality	Polyclonal
Formulation	Rabbit IgG in phosphate buffered saline (without Mg ²⁺ and Ca ²⁺), pH 7.4, 150mM NaCl, 0.02% sodium azide and 50% glycerol.
Storage Instructions	Store at -20°C for one year. For short term storage and frequent use, store at 4°C for up to one month. Avoid repeated freeze-thaw cycles.
Host	Rabbit
Uniprot ID	P43250

Technical Details

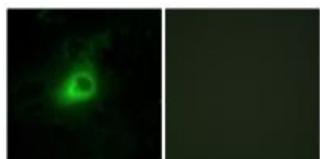
Immunogen	Synthesized peptide derived from N-terminal of human GRK6.
Predicted Reactive Species	Boar, Bovine, Canine, Golden Hamster
Isotype	IgG
Form	Liquid
Concentration	1 mg/ml

Purification	The antibody was affinity-purified from rabbit antiserum by affinity-chromatography using epitope-specific immunogen.
Suggested Dilutions	<p>Dilute the sample so that the expected range of concentrations fall within the detection range of this kit.</p> <p>If the expected range of concentration is unknown, a pilot test should be conducted to decide the optimal dilution ratio for your samples.</p> <p>Some PubMed article(s) citing the expression level of this target are as follows:</p> <p>Boster Bio's internal QC testing used:</p> <p>Western blotting: 1:500~1:3000</p> <p>Immunofluorescence: 1:100~1:500</p>

Anti-GRK6 Antibody (A03623) Images



Western blot analysis of extracts from Jurkat cells, COLO205 cells and HUVEC cells, using GRK6 antibody A03623.



Immunofluorescence analysis of HeLa cells, using GRK6 antibody A03623.

Submit a product review to Biocompare.com

Submit a review of this product to Biocompare.com to receive a \$20 Amazon.com giftcard! Your reviews help your fellow scientists make the right decisions. Thank you for your contribution.



Anti-GRK6 Antibody