

Anti-Prostate Apoptosis Response Protein-4 PAWR Antibody

Catalog Number: A03637

About PAWR

Pro-apoptotic protein capable of selectively inducing apoptosis in cancer cells, sensitizing the cells to diverse apoptotic stimuli and causing regression of tumors in animal models. Induces apoptosis in certain cancer cells by activation of the Fas prodeath pathway and coparallel inhibition of NF-kappa-B transcriptional activity. Inhibits the transcriptional activation and augments the transcriptional repression mediated by WT1. Down-regulates the anti-apoptotic protein BCL2 via its interaction with WT1. Seems also to be a transcriptional repressor by itself. May be directly involved in regulating the amyloid precursor protein (APP) cleavage activity of BACE1.

Hongzhe Li, J. Biol. Chem., Feb 2007; 282: 4943 - 4950.

Wuhan Xiao, Cancer Res., Aug 2003; 63: 4698 - 4704.

Thierry Virolle, J. Biol. Chem., Mar 2003; 278: 11802 - 11810.

Derek J. Richard, Genes & Dev., Feb 2001; 15: 328.

Overview

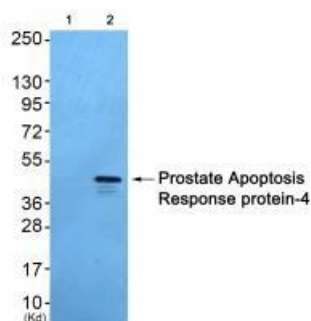
Product Name	Anti-Prostate Apoptosis Response Protein-4 PAWR Antibody
Reactive Species	Human, Mouse, Rat
Description	Boster Bio Anti-Prostate Apoptosis Response Protein-4 PAWR Antibody (Catalog # A03637). Tested in WB, IHC applications. This antibody reacts with Human, Mouse, Rat.
Application	IHC, WB
Clonality	Polyclonal
Formulation	Rabbit IgG in phosphate buffered saline (without Mg ²⁺ and Ca ²⁺), pH 7.4, 150mM NaCl, 0.02% sodium azide and 50% glycerol.
Storage Instructions	Store at -20°C for one year. For short term storage and frequent use, store at 4°C for up to one month. Avoid repeated freeze-thaw cycles.
Host	Rabbit
Uniprot ID	Q96IZ0

Technical Details

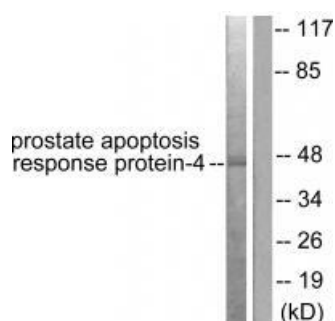
Immunogen	Synthesized peptide derived from human prostate apoptosis response protein-4.
Predicted Reactive Species	Boar, Bovine, Canine, Golden Hamster
Isotype	IgG
Form	Liquid

Concentration	1 mg/ml
Purification	The antibody was affinity-purified from rabbit antiserum by affinity-chromatography using epitope-specific immunogen.
Suggested Dilutions	<p>Dilute the sample so that the expected range of concentrations fall within the detection range of this kit.</p> <p>If the expected range of concentration is unknown, a pilot test should be conducted to decide the optimal dilution ratio for your samples.</p> <p>Some PubMed article(s) citing the expression level of this target are as follows:</p> <p>Boster Bio's internal QC testing used:</p> <p>Western blotting: 1:500~1:3000</p> <p>Immunohistochemistry: 1:50~1:100</p>

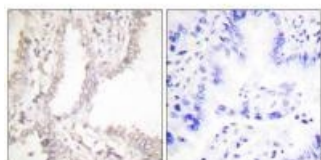
Anti-Prostate Apoptosis Response Protein-4 PAWR Antibody (A03637) Images



Western blot analysis of extracts from 293 cells (Lane 2), using Prostate Apoptosis Response Protein-4 antibody A03637. The lane on the left is treated with synthesized peptide.



Western blot analysis of extracts from NIH/3T3 cells, using Prostate Apoptosis Response Protein-4 antibody A03637.



Immunohistochemical analysis of paraffin-embedded human lung carcinoma tissue using Prostate Apoptosis Response Protein-4 antibody A03637.

Submit a product review to Biocompare.com

Submit a review of this product to Biocompare.com to receive a \$20 Amazon.com giftcard! Your reviews help your fellow scientists make the right decisions. Thank you for your contribution.



Anti-Prostate Apoptosis Response Protein-4 PAWR Antibody