

## Anti-Cbl-c Antibody

Catalog Number: A03693

### About CBLC

This antibody is suitable for Cancer, Immunology and Nuclear Signaling research. Cbl-c is also known as signal transduction protein CBL-C, SH3-binding protein CBL-C, CBL-3, and RING finger protein 57. Cbl proteins are a family of ubiquitin protein ligases (E3s) that negatively regulate signaling by targeting activated tyrosine kinases for degradation. Cbl-c (a.k.a. Cbl-3) is the most recently cloned member of the Cbl proteins and is expressed only in epithelial cells (the other Cbl proteins are ubiquitously expressed). Cbl-c, like the other mammalian Cbl proteins, can ubiquitinate the activated EGFR and target it for degradation. Cbl-c knock out mice show no obvious phenotype. Thus, the physiological role of Cbl-c is not known.

### Overview

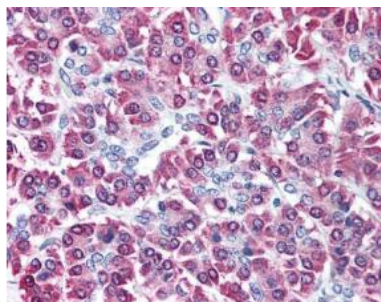
Product Name	Anti-Cbl-c Antibody
Reactive Species	Human
Description	Boster Bio Anti-Cbl-c Antibody (Catalog # A03693). Tested in ELISA, IHC, IP, WB applications. This antibody reacts with Human.
Application	ELISA, IP, IHC, WB
Clonality	Polyclonal
Formulation	0.02 M Potassium Phosphate, 0.15 M Sodium Chloride, pH 7.2, 0.01% (w/v) Sodium Azide
Storage Instructions	Store vial at -20°C prior to opening. Aliquot contents and freeze at -20°C or below for extended storage. Avoid cycles of freezing and thawing. Centrifuge product if not completely clear after standing at room temperature. This product is stable for several weeks at 4°C as an undiluted liquid. Dilute only prior to immediate use. Expiration date is one (1) year from date of opening. (Ship on dry ice.)
Host	Rabbit
Uniprot ID	Q9ULV8

### Technical Details

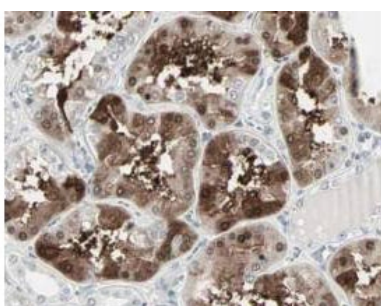
Immunogen	This affinity-purified antibody was prepared from whole rabbit serum produced by repeated immunizations with a synthetic peptide corresponding to the C-Terminal portion of Human Cbl-c.
Predicted Reactive Species	Chimpanzee
Isotype	IgG
Form	Liquid (sterile filtered)
Concentration	1.2 mg/ml by UV absorbance at 280 nm

Purification	<p>This affinity purified antibody is directed against human Cbl-c protein. The product was affinity purified from monospecific antiserum by immunoaffinity purification. A BLAST analysis was used to suggest that this antibody would react with Cbl-c from human and chimpanzee sources. Expect partial reactivity against mouse and rat sources of Cbl-c as ~83% sequence homology is on record for the immunogen sequence. Reactivity with Cbl-c from other sources has not been determined. No reactivity is expected with Cbl-a or Cbl-b.</p>
Suggested Dilutions	<p>Dilute the sample so that the expected range of concentrations fall within the detection range of this kit.</p> <p>If the expected range of concentration is unknown, a pilot test should be conducted to decide the optimal dilution ratio for your samples.</p> <p>Some PubMed article(s) citing the expression level of this target are as follows:</p> <p>Boster Bio's internal QC testing used:</p> <p>ELISA: 1:10,000 - 1:50,000</p> <p>IHC: 1:500 - 1:3,000</p> <p>IP: User optimized</p> <p>WB: 1:500 - 1:3,000</p>

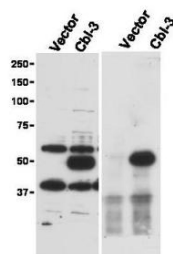
## Anti-Cbl-c Antibody (A03693) Images



Cbl-c was detected in paraffin-embedded sections of a variety of tissues including multi-human, multi-brain and multi-cancer slides using rabbit anti-Cbl-c Antigen Affinity purified polyclonal antibody (Catalog # A03693) at 5 ug/mL. Personal Communication, Tina Roush, LifeSpanBiosciences, Seattle, WA.



Cbl-c was detected in paraffin-embedded sections of ubuli in human kidney tissue using rabbit anti-Cbl-c Antigen Affinity purified polyclonal antibody (Catalog # A03693). Personal Communication, Kenneth Wester, www.proteinatlas.org, Uppsala, Sweden.



Western blot analysis of Cbl-c expression in transfected cell lysates (left panel). Lysates are from Hek 293T cells transfected with empty vector or with Cbl-c. The predicted size of Cbl-c is 52 kDa. Size markers in kDa are shown to the left of the panel. The right panel shows western blotting after first immunoprecipitating with Rabbit anti-Cbl-c followed by western blotting using a Goat anti-Cbl-c antibody. Cbl-c at 52KD was detected using rabbit anti-Cbl-c Antigen Affinity purified polyclonal antibody (Catalog # A03693). Personal Communication. Stan Lipkowitz, NCI, NIH, Bethesda, MD.

## Submit a product review to Biocompare.com

Submit a review of this product to Biocompare.com to receive a \$20 Amazon.com giftcard! Your reviews help your fellow scientists make the right decisions. Thank you for your contribution.



Anti-Cbl-c Antibody