

Anti-ELF4/Mef Antibody

Catalog Number: A03714

About ELF4

Transcriptional activator that binds to DNA sequences containing the consensus 5'-WGGA-3'. Transactivates promoters of the hematopoietic growth factor genes CSF2, IL3, IL8, and of the bovine lysozyme gene. Acts synergistically with RUNX1 to transactivate the IL3 promoter By similarity. Also transactivates the PRF1 promoter in natural killer (NK) cells. Plays a role in the development and function of NK and NK T-cells and in innate immunity. Controls the proliferation and homing of CD8+ T-cells via the Kruppel-like factors KLF4 and KLF2 By similarity. Controls cell senescence in a p53-dependent manner. Can also promote cellular transformation through inhibition of the p16 pathway. UniProtKB Q9Z2U4

Miyazaki Y., Oncogene 13:1721-1729(1996).

Aryee D.N.T., Gene 210:71-78(1998).

Ross M.T., Nature 434:325-337(2005).

Overview

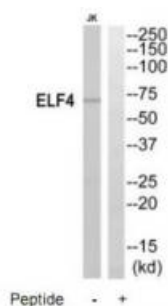
Product Name	Anti-ELF4/Mef Antibody
Reactive Species	Human
Description	Boster Bio Anti-ELF4/Mef Antibody (Catalog # A03714). Tested in WB applications. This antibody reacts with Human.
Application	WB
Clonality	Polyclonal
Formulation	Rabbit IgG in phosphate buffered saline (without Mg ²⁺ and Ca ²⁺), pH 7.4, 150mM NaCl, 0.02% sodium azide and 50% glycerol.
Storage Instructions	Store at -20°C for one year. For short term storage and frequent use, store at 4°C for up to one month. Avoid repeated freeze-thaw cycles.
Host	Rabbit
Uniprot ID	Q99607

Technical Details

Immunogen	Synthesized peptide derived from internal of human ELF4.
Predicted Reactive Species	Boar, Bovine, Canine, Golden Hamster
Isotype	IgG
Form	Liquid
Concentration	1 mg/ml

Purification	The antibody was affinity-purified from rabbit antiserum by affinity-chromatography using epitope-specific immunogen.
Suggested Dilutions	<p>Dilute the sample so that the expected range of concentrations fall within the detection range of this kit.</p> <p>If the expected range of concentration is unknown, a pilot test should be conducted to decide the optimal dilution ratio for your samples.</p> <p>Some PubMed article(s) citing the expression level of this target are as follows:</p> <p>Boster Bio's internal QC testing used:</p> <p>Western blotting: 1:500~1:3000</p>

Anti-ELF4/Mef Antibody (A03714) Images



Western blot analysis of extracts from Jurkat cells, using ELF4 antibody A03714.

Submit a product review to Biocompare.com

Submit a review of this product to Biocompare.com to receive a \$20 Amazon.com giftcard! Your reviews help your fellow scientists make the right decisions. Thank you for your contribution.



Anti-ELF4/Mef Antibody