

Anti-Smac/Diablo Antibody

Catalog Number: A03790

About DIABLO

Apoptosis is a conserved cell suicide program essential for the development and homeostasis of multi-cellular organisms. Abnormal inhibition of apoptosis is a hallmark of cancer and autoimmune diseases, whereas excessive cell death is found in neurodegenerative disorders such as Alzheimers disease. Executioners of the apoptotic program are cysteine proteases termed caspases that exist as inactive zymogens in living cells and are activated during apoptosis. Active caspases cleave key intracellular protein substrates, resulting in the characteristic morphological changes associated with apoptosis. The release of cytochrome c from the mitochondria triggers the oligomerization of Apaf-1 in an ATP/dATP-dependent manner and induces the autoactivation of caspase-9. Active caspase-9 in turn activates downstream effector caspases including caspase -3, -6 and -7.

Overview

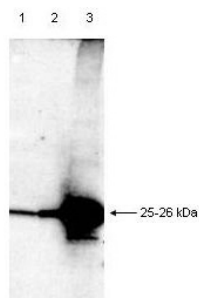
Product Name	Anti-Smac/Diablo Antibody
Reactive Species	Human
Description	Boster Bio Anti-Smac/Diablo Antibody (Catalog # A03790). Tested in WB applications. This antibody reacts with Human.
Application	WB
Clonality	Polyclonal
Formulation	0.02 M Potassium Phosphate, 0.15 M Sodium Chloride, pH 7.2, 0.01% (w/v) Sodium Azide
Storage Instructions	Store vial at -20°C prior to opening. Aliquot contents and freeze at -20°C or below for extended storage. Avoid cycles of freezing and thawing. Centrifuge product if not completely clear after standing at room temperature. This product is stable for several weeks at 4°C as an undiluted liquid. Dilute only prior to immediate use. Expiration date is one (1) year from date of opening. (Ship on dry ice.)
Host	Rabbit
Uniprot ID	Q9NR28

Technical Details

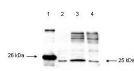
Immunogen	This whole rabbit serum was prepared by repeated immunizations with recombinant His6-tagged human Smac/DIABLO protein (amino acids 56-239).
Predicted Reactive Species	Bovine, Canine, Equine, Guinea Pig, Rabbit, Yeast, Zebrafish
Cross Reactivity	No cross reactivity with other proteins.
Isotype	Antiserum

Form	Liquid (sterile filtered)
Concentration	85 mg/mL by Refractometry
Purification	This antiserum is directed against human Smac/DIABLO and is useful in determining its presence in various assays.
Suggested Dilutions	<p>Dilute the sample so that the expected range of concentrations fall within the detection range of this kit.</p> <p>If the expected range of concentration is unknown, a pilot test should be conducted to decide the optimal dilution ratio for your samples.</p> <p>Some PubMed article(s) citing the expression level of this target are as follows:</p> <p>Boster Bio's internal QC testing used:</p> <p>ELISA: 1:5,000 - 1:20,000</p> <p>IP: 1:100</p> <p>WB: 1:1,000 - 1:2,000</p>

Anti-Smac/Diablo Antibody (A03790) Images



Western blot analysis using rabbit anti-Smac polyclonal antibody (Catalog # A03790) at 1:1000 detected a 25-26 kDa band in partially purified recombinant human Smac protein. Lanes 1-3 are loaded with 1, 10 and 100 ng of protein per lane, respectively. The blot was developed using chemiluminescence (ECL) method (Catalog # EK1002).



Western blot using rabbit anti-Smac polyclonal antibody (Catalog # A03790) at 1:1000 detects a 26 kDa band when 1

Submit a product review to Biocompare.com

Submit a review of this product to Biocompare.com to receive a \$20 Amazon.com giftcard! Your reviews help your fellow scientists make the right decisions. Thank you for your contribution.



Anti-Smac/Diablo Antibody