

## Anti-Cyclin A Antibody

Catalog Number: A03889

### About CCNA1

May be involved in the control of the cell cycle at the G1/S (start) and G2/M (mitosis) transitions. May primarily function in the control of the germline meiotic cell cycle and additionally in the control of mitotic cell cycle in some somatic cells.

Jason S. Knight, J. Virol., Dec 2004; 78: 12857 - 12867.

Motoo Katabami, J. Biol. Chem., Apr 2005; 280: 16728 - 16738.

Karen E. Knudsen, J. Biol. Chem., Sep 1999; 274: 27632.

Peng Ji, J. Biol. Chem., Aug 2006; 281: 24058 - 24069.

### Overview

Product Name	Anti-Cyclin A Antibody
Reactive Species	Human, Mouse
Description	Boster Bio Anti-Cyclin A Antibody (Catalog # A03889). Tested in WB, IHC, IF applications. This antibody reacts with Human, Mouse.
Application	IF, IHC, WB
Clonality	Polyclonal
Formulation	Rabbit IgG in phosphate buffered saline (without Mg <sup>2+</sup> and Ca <sup>2+</sup> ), pH 7.4, 150mM NaCl, 0.02% sodium azide and 50% glycerol.
Storage Instructions	Store at -20°C for one year. For short term storage and frequent use, store at 4°C for up to one month. Avoid repeated freeze-thaw cycles.
Host	Rabbit
Uniprot ID	P78396

### Technical Details

Immunogen	Synthesized peptide derived from human Cyclin A.
Predicted Reactive Species	Boar, Bovine, Canine, Golden Hamster
Isotype	IgG
Form	Liquid
Concentration	1 mg/ml
Purification	The antibody was affinity-purified from rabbit antiserum by affinity-chromatography using epitope-

specific immunogen.

**Suggested Dilutions**

Dilute the sample so that the expected range of concentrations fall within the detection range of this kit.

If the expected range of concentration is unknown, a pilot test should be conducted to decide the optimal dilution ratio for your samples.

Some PubMed article(s) citing the expression level of this target are as follows:

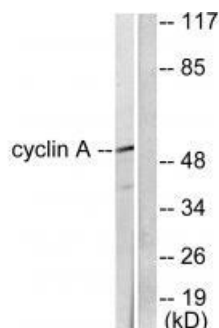
Boster Bio's internal QC testing used:

Western blotting: 1:500~1:3000

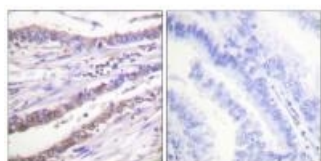
Immunohistochemistry: 1:50~1:100

Immunofluorescence: 1:100~1:500

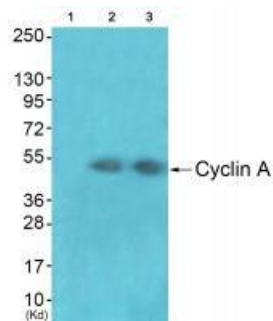
## Anti-Cyclin A Antibody (A03889) Images



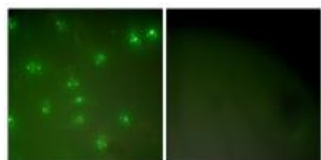
Western blot analysis of extracts from COS7 cells, using Cyclin A antibody A03889.



Immunohistochemical analysis of paraffin-embedded human lung carcinoma tissue using Cyclin A antibody A03889.



Western blot analysis of extracts from JK cells (Lane 2) and cos-7 cells (Lane 3), using Cyclin A antibody A03889. The lane on the left is treated with synthesized peptide.



Immunofluorescence analysis of COS7 cells, using Cyclin A antibody A03889.

## 1 Publications Citing This Product

1. PubMed ID: 26837415, Overexpression of miR-30a in lung adenocarcinoma A549 cell line inhibits migration and invasion via targeting EYA2

Visit [bosterbio.com/anti-cyclin-a-antibody-a03889-boster.html](http://bosterbio.com/anti-cyclin-a-antibody-a03889-boster.html) to see all 1 publications.

## Submit a product review to Biocompare.com

Submit a review of this product to Biocompare.com to receive a \$20 Amazon.com giftcard! Your reviews help your fellow scientists make the right decisions. Thank you for your contribution.



Anti-Cyclin A Antibody