

## Anti-alpha-Tubulin TUBA1A Antibody

Catalog Number: A03989

### About TUBA1A

alpha-Tubulin belongs to the tubulin superfamily, which is composed of six distinct families. Along with beta-tubulins, alpha-Tubulins are the major components of microtubules. These microtubules are involved in a wide variety of cellular activities ranging from mitosis and transport events to cell movement and the maintenance of cell shape. Alpha- and beta-tubulin dimers are assembled to 13 protofilaments that form a microtubule of 22-nm diameter (reviewed in 1). Tyrosine ligase adds a C-terminal tyrosine to monomeric alpha-Tubulin. Assembled microtubules can again be detyrosinated by a cytoskeleton-associated carboxypeptidase (2). Another post-translational modification of detyrosinated alpha-Tubulin is C-terminal polyglutamylolation, which is characteristic of microtubules in neuronal cells and the mitotic spindle (3). Like GAPDH and  $\beta$ -Actin, this antibody makes an excellent loading control in immunoblots.

### Overview

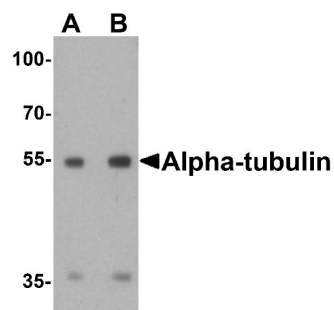
Product Name	Anti-alpha-Tubulin TUBA1A Antibody
Reactive Species	Human, Mouse, Rat
Description	Boster Bio Anti-alpha-Tubulin TUBA1A Antibody (Catalog # A03989). Tested in ELISA, WB, IHC-P, IF applications. This antibody reacts with Human, Mouse, Rat.
Application	ELISA, IF, IHC-P, WB
Clonality	Polyclonal Clone: SK7
Formulation	alpha-Tubulin antibody is supplied in PBS containing 0.02% sodium azide.
Storage Instructions	alpha-Tubulin antibody can be stored at 4°C for three months and -20°C, stable for up to one year.
Host	Rabbit
Uniprot ID	Q71U36

### Technical Details

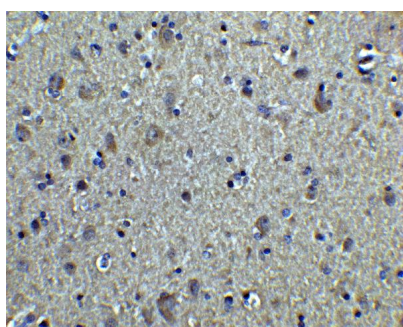
Immunogen	alpha-Tubulin antibody was raised against an 18 amino acid peptide near the carboxy terminus of human alpha-Tubulin
Predicted Reactive Species	Mouse
Cross Reactivity	alpha-Tubulin antibody is human, mouse and rat reactive.
Isotype	IgG
Form	Liquid
Concentration	1 mg/mL

Purification	alpha-Tubulin antibody is affinity chromatography purified via peptide column.
Suggested Dilutions	<p>Dilute the sample so that the expected range of concentrations fall within the detection range of this kit.</p> <p>If the expected range of concentration is unknown, a pilot test should be conducted to decide the optimal dilution ratio for your samples.</p> <p>Some PubMed article(s) citing the expression level of this target are as follows:</p> <p>Boster Bio's internal QC testing used:</p> <p>alpha-Tubulin antibody can be used for detection of alpha-Tubulin by Western blot at 1 - 2 ug/ml.</p> <p>Antibody can also be used for Immunohistochemistry starting at 2.5 ug/mL. For immunofluorescence start at 20 ug/mL.</p> <p>Antibody validated: Western Blot in human, mouse, and rat samples; Immunohistochemistry in human samples and Immunofluorescence in human samples. All other applications and species not yet tested. Optimal dilutions for each application should be determined by the researcher.</p>

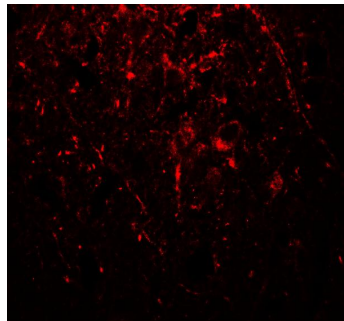
## Anti-alpha-Tubulin TUBA1A Antibody (A03989) Images



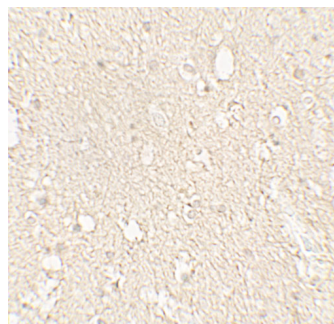
Western blot analysis of alpha-Tubulin in 293



Immunohistochemistry of alpha-Tubulin in human brain tissue with alpha-Tubulin antibody at 2.5 ug/ml.



Immunofluorescence of alpha-Tubulin in human brain tissue with alpha-Tubulin antibody at 20 ug/mL.



Immunohistochemistry of alpha-Tubulin in human brain tissue with alpha-Tubulin antibody at 5 ug/mL.

**Submit a product review to Biocompare.com**

Submit a review of this product to Biocompare.com to receive a \$20 Amazon.com giftcard! Your reviews help your fellow scientists make the right decisions. Thank you for your contribution.



## Anti-alpha-Tubulin TUBA1A Antibody