

## Anti-Cyclin-L1 CCNL1 Antibody

Catalog Number: A04105

### About CCNL1

Transcriptional regulator which participates in regulating the pre-mRNA splicing process. Seems to be involved in the regulation of RNA polymerase II (pol II). Functions in association with cyclin-dependent kinases (CDKs) and has a role in the second step of splicing. May be a candidate proto-oncogene in head and neck squamous cell carcinomas (HNSCC). Inhibited by the CDK-specific inhibitor p21.

A. Hamid Boulares, J. Biol. Chem., Aug 1999; 274: 22932.

Alessandra Pagano, Am J Physiol Lung Cell Mol Physiol, Jun 2007; 10.1152.

Mi Young Kim, Genes & Dev., Sep 2005; 19: 1951 - 1967.

Silke Sasse, Nucleic Acids Res., Feb 2004; 32: 669 - 680.

### Overview

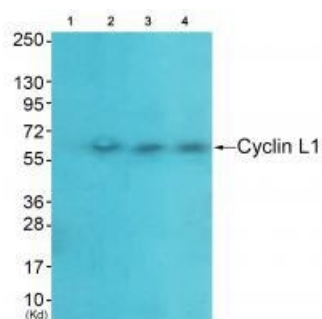
Product Name	Anti-Cyclin-L1 CCNL1 Antibody
Reactive Species	Human, Mouse, Rat
Description	Boster Bio Anti-Cyclin-L1 CCNL1 Antibody (Catalog # A04105). Tested in WB, IHC applications. This antibody reacts with Human, Mouse, Rat.
Application	IHC, WB
Clonality	Polyclonal
Formulation	Rabbit IgG in phosphate buffered saline (without Mg <sup>2+</sup> and Ca <sup>2+</sup> ), pH 7.4, 150mM NaCl, 0.02% sodium azide and 50% glycerol.
Storage Instructions	Store at -20°C for one year. For short term storage and frequent use, store at 4°C for up to one month. Avoid repeated freeze-thaw cycles.
Host	Rabbit
Uniprot ID	Q9UK58

### Technical Details

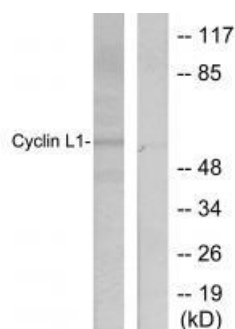
Immunogen	Synthesized peptide derived from human Cyclin-L1.
Predicted Reactive Species	Boar, Bovine, Canine, Golden Hamster
Isotype	IgG
Form	Liquid
Concentration	1 mg/ml

Purification	The antibody was affinity-purified from rabbit antiserum by affinity-chromatography using epitope-specific immunogen.
Suggested Dilutions	<p>Dilute the sample so that the expected range of concentrations fall within the detection range of this kit.</p> <p>If the expected range of concentration is unknown, a pilot test should be conducted to decide the optimal dilution ratio for your samples.</p> <p>Some PubMed article(s) citing the expression level of this target are as follows:</p> <p>Boster Bio's internal QC testing used:</p> <p>Western blotting: 1:500~1:3000</p> <p>Immunohistochemistry: 1:50~1:100</p>

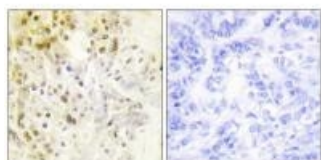
## Anti-Cyclin-L1 CCNL1 Antibody (A04105) Images



Western blot analysis of extracts from HeLa cells (Lane 2), A549 cells (Lane 3) and HepG2 cells (Lane 4), using Cyclin-L1 antibody A04105. The lane on the left is treated with synthesized peptide.



Western blot analysis of extracts from HepG2 cells, using Cyclin-L1 antibody A04105.



Immunohistochemical analysis of paraffin-embedded human breast carcinoma tissue using Cyclin-L1 antibody A04105.

## Submit a product review to Biocompare.com

Submit a review of this product to Biocompare.com to receive a \$20 Amazon.com giftcard! Your reviews help your fellow scientists make the right decisions. Thank you for your contribution.



Anti-Cyclin-L1 CCNL1 Antibody