

Anti-C1QB Antibody

Catalog Number: A04233

About C1QB

C1q associates with the proenzymes C1r and C1s to yield C1, the first component of the serum complement system. The collagen-like regions of C1q interact with the Ca²⁺-dependent C1r2C1s2 proenzyme complex, and efficient activation of C1 takes place on interaction of the globular heads of C1q with the Fc regions of IgG or IgM antibody present in immune complexes.

Reid K.B.M.; Biochem. J. 231:729-735(1985).

Gregory S.G., Nature 441:315-321(2006).

The MGC Project Team; Genome Res. 14:2121-2127(2004).

Overview

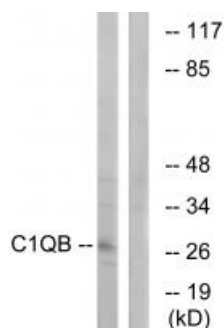
| | |
|----------------------|--|
| Product Name | Anti-C1QB Antibody |
| Reactive Species | Human |
| Description | Boster Bio Anti-C1QB Antibody (Catalog # A04233). Tested in WB, IHC, IF applications. This antibody reacts with Human. |
| Application | IF, IHC, WB |
| Clonality | Polyclonal |
| Formulation | Rabbit IgG in phosphate buffered saline (without Mg ²⁺ and Ca ²⁺), pH 7.4, 150mM NaCl, 0.02% sodium azide and 50% glycerol. |
| Storage Instructions | Store at -20°C for one year. For short term storage and frequent use, store at 4°C for up to one month. Avoid repeated freeze-thaw cycles. |
| Host | Rabbit |
| Uniprot ID | P02746 |

Technical Details

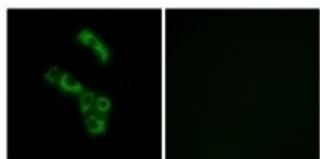
| | |
|----------------------------|--|
| Immunogen | Synthesized peptide derived from internal of human C1QB. |
| Predicted Reactive Species | Boar, Bovine, Canine, Golden Hamster |
| Isotype | IgG |
| Form | Liquid |
| Concentration | 1 mg/ml |
| Purification | The antibody was affinity-purified from rabbit antiserum by affinity-chromatography using epitope- |

| | |
|---------------------|--|
| | specific immunogen. |
| Suggested Dilutions | <p>Dilute the sample so that the expected range of concentrations fall within the detection range of this kit.</p> <p>If the expected range of concentration is unknown, a pilot test should be conducted to decide the optimal dilution ratio for your samples.</p> <p>Some PubMed article(s) citing the expression level of this target are as follows:</p> <p>Boster Bio's internal QC testing used:</p> <p>Western blotting: 1:500~1:3000</p> <p>Immunofluorescence: 1:100~1:500</p> |

Anti-C1QB Antibody (A04233) Images



Western blot analysis of extracts from Jurkat cells, using C1QB antibody A04233.



Immunofluorescence analysis of A549 cells, using C1QB antibody A04233.

Submit a product review to Biocompare.com

Submit a review of this product to Biocompare.com to receive a \$20 Amazon.com giftcard! Your reviews help your fellow scientists make the right decisions. Thank you for your contribution.



Anti-C1QB Antibody