

Anti-EPHB6/Eph Receptor B6 Antibody

Catalog Number: A04270

About EPHB6

Kinase-defective receptor for members of the ephrin-B family. Binds to ephrin-B1 and ephrin-B2. Modulates cell adhesion and migration by exerting both positive and negative effects upon stimulation with ephrin-B2. Inhibits JNK activation, T-cell receptor-induced IL-2 secretion and CD25 expression upon stimulation with ephrin-B2.

atsuoka H., Biochem. Biophys. Res. Commun. 235:487-492(1997).

Hillier L.W., Nature 424:157-164(2003).

Zhang Z., Protein Sci. 13:2819-2824(2004).

Overview

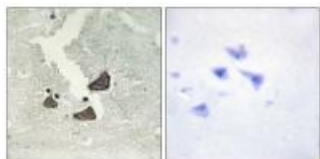
Product Name	Anti-EPHB6/Eph Receptor B6 Antibody
Reactive Species	Human, Mouse, Rat
Description	Boster Bio Anti-EPHB6/Eph Receptor B6 Antibody (Catalog # A04270). Tested in WB, IHC, IF applications. This antibody reacts with Human, Mouse, Rat.
Application	IF, IHC, WB
Clonality	Polyclonal
Formulation	Rabbit IgG in phosphate buffered saline (without Mg ²⁺ and Ca ²⁺), pH 7.4, 150mM NaCl, 0.02% sodium azide and 50% glycerol.
Storage Instructions	Store at -20°C for one year. For short term storage and frequent use, store at 4°C for up to one month. Avoid repeated freeze-thaw cycles.
Host	Rabbit
Uniprot ID	O15197

Technical Details

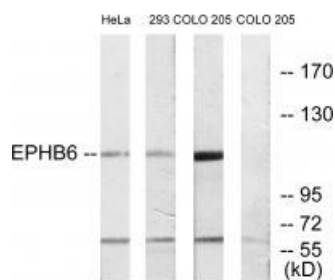
Immunogen	Synthesized peptide derived from internal of human EPHB6.
Predicted Reactive Species	Boar, Bovine, Canine, Golden Hamster
Isotype	IgG
Form	Liquid
Concentration	1 mg/ml
Purification	The antibody was affinity-purified from rabbit antiserum by affinity-chromatography using epitope-

	specific immunogen.
Suggested Dilutions	<p>Dilute the sample so that the expected range of concentrations fall within the detection range of this kit.</p> <p>If the expected range of concentration is unknown, a pilot test should be conducted to decide the optimal dilution ratio for your samples.</p> <p>Some PubMed article(s) citing the expression level of this target are as follows:</p> <p>Boster Bio's internal QC testing used:</p> <p>Western blotting: 1:500~1:3000</p> <p>Immunohistochemistry: 1:50~1:100</p> <p>Immunofluorescence: 1:100~1:500</p>

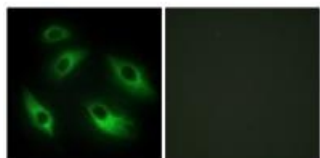
Anti-EPHB6/Eph Receptor B6 Antibody (A04270) Images



Immunohistochemistry analysis of paraffin-embedded human brain tissue using EPHB6 antibody A04270.



Western blot analysis of extracts from HeLa cells, 293 cells and COLO cells, using EPHB6 antibody A04270.



Immunofluorescence analysis of HeLa cells, using EPHB6 antibody A04270.

Submit a product review to Biocompare.com

Submit a review of this product to Biocompare.com to receive a \$20 Amazon.com giftcard! Your reviews help your fellow scientists make the right decisions. Thank you for your contribution.



Anti-EPHB6/Eph Receptor B6 Antibody