

Anti-Sprouty-4 SPRY4 Antibody

Catalog Number: A04343

About SPRY4

Sprouty-4 (also known as SPRY4) is an inhibitor of the insulin receptor and EGFR-transduced mitogen-activated protein kinase (MAPK) signaling pathway downstream of FGF and EGF receptor tyrosine kinase activation. It is positioned upstream of RAS activation and impairs the formation of active GTP-RAS. SPRY4 is widely expressed, with different isoforms. The protein consists of 322 amino acids, with a cysteine-rich region, Src homology 3 binding regions, proline-rich regions, and a PEST sequence. It is expressed predominantly in the cytoplasm. Northern results show bands across most tissues, with strongest expression in heart, brain, placenta, lung, and intestine.

Overview

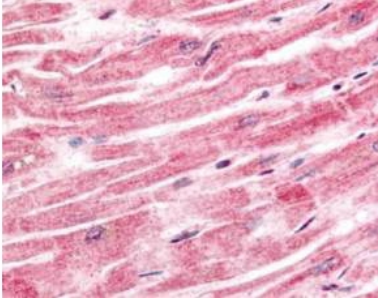
Product Name	Anti-Sprouty-4 SPRY4 Antibody
Reactive Species	Human, Mouse
Description	Boster Bio Anti-Sprouty-4 SPRY4 Antibody (Catalog # A04343). Tested in ELISA, IHC, WB applications. This antibody reacts with Human, Mouse.
Application	ELISA, IHC, WB
Clonality	Polyclonal
Formulation	0.02 M Potassium Phosphate, 0.15 M Sodium Chloride, pH 7.2, 0.01% (w/v) Sodium Azide
Storage Instructions	Store vial at -20°C prior to opening. Aliquot contents and freeze at -20°C or below for extended storage. Avoid cycles of freezing and thawing. Centrifuge product if not completely clear after standing at room temperature. This product is stable for several weeks at 4°C as an undiluted liquid. Dilute only prior to immediate use. Expiration date is one (1) year from date of opening. (Ship on dry ice.)
Host	Rabbit
Uniprot ID	Q9C004

Technical Details

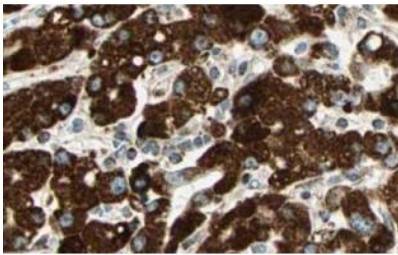
Immunogen	This affinity purified antibody was prepared from whole rabbit serum produced by repeated immunizations with a synthetic peptide corresponding to a C-Terminal region near amino acids 275-299 of Human Sprouty-4 protein.
Predicted Reactive Species	Chimpanzee
Cross Reactivity	No cross reactivity with other proteins.
Isotype	IgG
Form	Liquid (sterile filtered)

Concentration	1.1 mg/mL by UV absorbance at 280 nm
Purification	This affinity purified antibody is directed against human Sprouty-4 protein. The product was affinity purified from monospecific antiserum by immunoaffinity purification. A BLAST analysis was used to suggest reactivity with this protein from human and chimpanzee based on 100% homology for the immunogen sequence. Cross-reactivity is expected with Sprouty-4.
Suggested Dilutions	<p>Dilute the sample so that the expected range of concentrations fall within the detection range of this kit.</p> <p>If the expected range of concentration is unknown, a pilot test should be conducted to decide the optimal dilution ratio for your samples.</p> <p>Some PubMed article(s) citing the expression level of this target are as follows:</p> <p>Boster Bio's internal QC testing used:</p> <p>ELISA: 1:3,000 - 1:12,000</p> <p>IHC: 1 µg/ml to 10 µg/ml</p> <p>WB: 1:100 - 1:1,000</p>

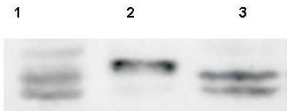
Anti-Sprouty-4 SPRY4 Antibody (A04343) Images



Sprouty-4 was detected in paraffin-embedded sections of human heart tissue using rabbit anti-Sprouty-4 Antigen Affinity purified polyclonal antibody (Catalog # A04343) at 2.5 ug/mL. The immunohistochemical section was developed using SABC method (Catalog # SA1022). Staining: Sprouty-4 as precipitated red signal with hematoxylin purple nuclear counterstain.



Sprouty-4 was detected in paraffin-embedded sections of human liver tissue using rabbit anti-Sprouty-4 Antigen Affinity purified polyclonal antibody (Catalog # A04343) at 2.5 ug/mL. The immunohistochemical section was developed using SABC method (Catalog # SA1022). Staining: Sprouty-4 as precipitated brown with blue nuclear counterstain.



Western blot analysis of Sprouty-4 expression in HeLa cell lysates (lane 1), SW13 cell lysates (lane 2) and C2C12 cell lysates (lane 3). Sprouty-4 at 35KD was detected using rabbit anti-Sprouty-4 Antigen Affinity purified polyclonal antibody (Catalog # A04343) at 1:100.

Submit a product review to Biocompare.com

Submit a review of this product to Biocompare.com to receive a \$20 Amazon.com giftcard! Your reviews help your fellow scientists make the right decisions. Thank you for your contribution.



Anti-Sprouty-4 SPRY4 Antibody