

Anti-EIF2 Alpha Eif2s1 Antibody

Catalog Number: A04387

About Eif2s1

EIF2S1 (Eukaryotic Translation Initiation Factor 2, Subunit 1), also called EIF2-alpha, is a protein that in humans is encoded by the EIF2S1 gene. Hartz (2010) mapped the EIF2S1 gene to chromosome 14q23.3 based on an alignment of the EIF2S1 sequence with the genomic sequence (GRCh37). Ernst et al. (1987) stated that protein synthesis is inhibited due to phosphorylation of Eif2-alpha in hemin-deprived rabbit reticulocyte lysates. HeLa cells subjected to heat shock, serum deprivation, or interferon treatment followed by virus infection also show a correlation between EIF2-alpha phosphorylation and translational repression. Jacob et al. (1989) found that the alpha-Pal transcription factor bound to 2 palindromic sites within the EIF2-alpha promoter and was essential for transcription of the EIF2-alpha gene.

Overview

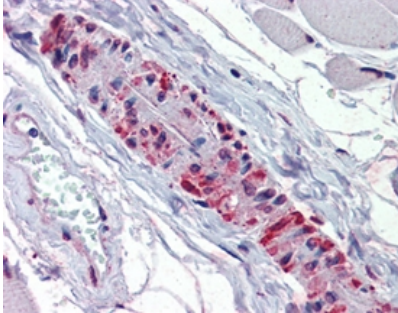
Product Name	Anti-EIF2 Alpha Eif2s1 Antibody
Reactive Species	Human, Mouse, Rat
Description	Boster Bio Anti-EIF2 Alpha Eif2s1 Antibody catalog # A04387. Tested in IHC, WB applications. This antibody reacts with Human, Mouse, Rat.
Application	IHC, WB
Clonality	Polyclonal
Formulation	Each vial contains 0.09% sodium azide and 50% glycerol.
Storage Instructions	Store at -20°C for one year. For short-term storage and frequent use, store at 4°C for up to one month. Avoid repeated freeze-thaw cycles.
Host	Rabbit
Uniprot ID	P68101

Technical Details

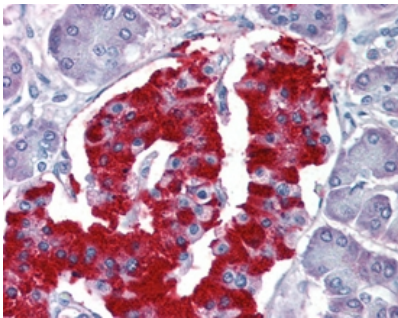
Immunogen	Synthetic peptide corresponding to a portion of rat eIF2-alpha .
Predicted Reactive Species	Bovine, Goat, Guinea Pig, Hamster, Monkey, Sheep
Cross Reactivity	No cross reactivity with other proteins.
Isotype	IgG
Form	Liquid
Concentration	0.5-1mg/ml, actual concentration vary by lot. Use suggested dilution ratio to decide dilution procedure.

Purification	Immunoaffinity purified.
Suggested Dilutions	<p>Dilute the sample so that the expected range of concentrations fall within the detection range of this kit.</p> <p>If the expected range of concentration is unknown, a pilot test should be conducted to decide the optimal dilution ratio for your samples.</p> <p>Some PubMed article(s) citing the expression level of this target are as follows:</p> <p>Boster Bio's internal QC testing used:</p> <p>WB, 1ug/ml, ECL, Human, Mouse, Rat</p>

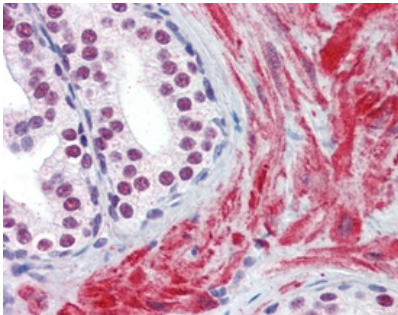
Anti-EIF2 Alpha Eif2s1 Antibody (A04387) Images



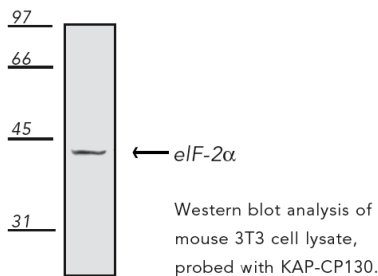
EIF2 Alpha was detected in paraffin-embedded sections of human pancreas tissues using rabbit anti-EIF2 Alpha Antigen Affinity purified polyclonal antibody (Catalog # A04387) at 10 ug/mL. The immunohistochemical section was developed using SABC method (Catalog # SA1022).



EIF2 Alpha was detected in paraffin-embedded sections of human prostate tissues using rabbit anti-EIF2 Alpha Antigen Affinity purified polyclonal antibody (Catalog # A04387) at 10 ug/mL. The immunohistochemical section was developed using SABC method (Catalog # SA1022).



EIF2 Alpha was detected in paraffin-embedded sections of human vessel tissues using rabbit anti-EIF2 Alpha Antigen Affinity purified polyclonal antibody (Catalog # A04387) at 10 ug/mL. The immunohistochemical section was developed using SABC method (Catalog # SA1022).



Western blot analysis of EIF2 Alpha expression in NIH3T3 whole cell lysates (lane 1). EIF2 Alpha at 36KD was detected using rabbit anti-EIF2 Alpha Antigen Affinity purified polyclonal antibody (Catalog # A04387) at 1 ug/mL. The blot was developed using chemiluminescence (ECL) method (Catalog # EK1002).

Submit a product review to Biocompare.com

Submit a review of this product to Biocompare.com to receive a \$20 Amazon.com giftcard! Your reviews help your fellow scientists make the right decisions. Thank you for your contribution.



Anti-EIF2 Alpha Eif2s1 Antibody