

Anti-SENP3 Antibody

Catalog Number: A04474

About SENP3

Protease that releases SUMO2 and SUMO3 monomers from sumoylated substrates, but has only weak activity against SUMO1 conjugates. Deconjugates SUMO2 from MEF2D, which increases its transcriptional activation capability. Deconjugates SUMO2 and SUMO3 from CDCA8. Redox sensor that, when redistributed into nucleoplasm, can act as an effector to enhance HIF1A transcriptional activity by desumoylating EP300. Required for rRNA processing through deconjugation of SUMO2 and SUMO3 from nucleophosmin, NPM1. Plays a role in the regulation of sumoylation status of ZNF148. Functions as a component of the Five Friends of Methylated CHTOP (5FMC) complex; the 5FMC complex is recruited to ZNF148 by methylated CHTOP, leading to desumoylation of ZNF148 and subsequent transactivation of ZNF148 target genes.

Yeh E.T.H., Gene 248:1-14(2000).

Choi S.J., Submitted (OCT-1999) to the EMBL/GenBank/DDBJ databases.

Wiemann S., Genome Res. 11:422-435(2001).

Overview

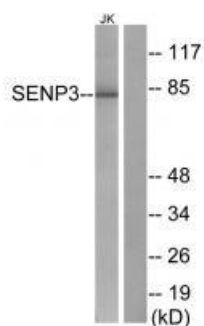
Product Name	Anti-SENP3 Antibody
Reactive Species	Human, Mouse
Description	Boster Bio Anti-SENP3 Antibody (Catalog # A04474). Tested in WB, IHC applications. This antibody reacts with Human, Mouse.
Application	IHC, WB
Clonality	Polyclonal
Formulation	Rabbit IgG in phosphate buffered saline (without Mg ²⁺ and Ca ²⁺), pH 7.4, 150mM NaCl, 0.02% sodium azide and 50% glycerol.
Storage Instructions	Store at -20°C for one year. For short term storage and frequent use, store at 4°C for up to one month. Avoid repeated freeze-thaw cycles.
Host	Rabbit
Uniprot ID	Q9H4L4

Technical Details

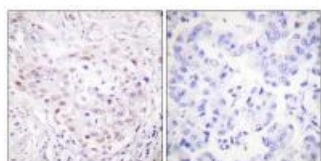
Immunogen	Synthesized peptide derived from Internal of human SENP3.
Predicted Reactive Species	Boar, Bovine, Canine, Golden Hamster
Isotype	IgG
Form	Liquid

Concentration	1 mg/ml
Purification	The antibody was affinity-purified from rabbit antiserum by affinity-chromatography using epitope-specific immunogen.
Suggested Dilutions	<p>Dilute the sample so that the expected range of concentrations fall within the detection range of this kit.</p> <p>If the expected range of concentration is unknown, a pilot test should be conducted to decide the optimal dilution ratio for your samples.</p> <p>Some PubMed article(s) citing the expression level of this target are as follows:</p> <p>Boster Bio's internal QC testing used:</p> <p>Western blotting: 1:500~1:3000</p> <p>Immunohistochemistry: 1:50~1:100</p>

Anti-SENP3 Antibody (A04474) Images



Western blot analysis of extracts from Jurkat cells, using SENP3 antibody A04474.



Immunohistochemistry analysis of paraffin-embedded human breast carcinoma tissue, using SENP3 antibody A04474.

Submit a product review to Biocompare.com

Submit a review of this product to Biocompare.com to receive a \$20 Amazon.com giftcard! Your reviews help your fellow scientists make the right decisions. Thank you for your contribution.



Anti-SENP3 Antibody