

## Anti-BORIS CTCFL Antibody

Catalog Number: A04503

### About CTCFL

Anti-BORIS antibody is suitable for Cancer, Immunology and Nuclear Signaling research. BORIS (Brother of the Regulator of Imprinted Sites) also known as CCCTC-binding factor-like protein, is normally only expressed in the testis and expressed in a mutually exclusive manner with CTCF during male germ cell development. However, previous studies have shown that BORIS is abnormally activated in a wide range of human cancers. Expression of BORIS in normally BORIS-negative cells promotes cell growth that may lead to transformation. BORIS maps to the cancer-associated amplification region thought to contain an oncogene or dominant-immortalizing gene. BORIS is a candidate protein for the epigenetic reprogramming factor acting in the male germ line. BORIS is found in both the nucleus and cytoplasm. BORIS antibody can be used to investigate epigenetic regulation.

### Overview

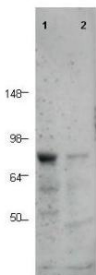
Product Name	Anti-BORIS CTCFL Antibody
Reactive Species	Human
Description	Boster Bio Anti-BORIS CTCFL Antibody (Catalog # A04503). Tested in ELISA, WB applications. This antibody reacts with Human.
Application	ELISA, WB
Clonality	Polyclonal
Formulation	0.02 M Potassium Phosphate, 0.15 M Sodium Chloride, pH 7.2, 0.01% (w/v) Sodium Azide
Storage Instructions	Store BORIS Antibody at -20°C prior to opening. Aliquot contents and freeze at -20°C or below for extended storage. Avoid cycles of freezing and thawing. Centrifuge product if not completely clear after standing at room temperature. This product is stable for several weeks at 4°C as an undiluted liquid. Dilute only prior to immediate use. Expiration date is one (1) year from date of opening. (Ship on dry ice.)
Host	Rabbit
Uniprot ID	Q8NI51

### Technical Details

Immunogen	This affinity purified antibody was prepared from whole rabbit serum produced by repeated immunizations with a synthetic peptide corresponding to N-Terminal region near aa 1-30 of human BORIS protein.
Predicted Reactive Species	Chimpanzee
Cross Reactivity	No cross reactivity with other proteins.
Isotype	IgG

Form	Liquid (sterile filtered)
Concentration	1.28 mg/mL by UV absorbance at 280 nm
Purification	This affinity-purified antibody is directed against the human BORIS protein. The product was affinity purified from monospecific antiserum by immunoaffinity purification. A BLAST analysis was used to suggest cross-reactivity with BORIS proteins from human and chimpanzee. Partial reactivity may occur against BORIS from mouse, dog and rat sources based on varying degrees of homology to the immunizing sequence. Reactivity against homologues from other sources is not known.
Suggested Dilutions	<p>Dilute the sample so that the expected range of concentrations fall within the detection range of this kit.</p> <p>If the expected range of concentration is unknown, a pilot test should be conducted to decide the optimal dilution ratio for your samples.</p> <p>Some PubMed article(s) citing the expression level of this target are as follows:</p> <p>Boster Bio's internal QC testing used:</p> <p>ELISA: 1:2,000 - 1:10,000</p> <p>WB: 1:200 - 1:2,000</p>

## Anti-BORIS CTCFL Antibody (A04503) Images



Western blot analysis of BORIS expression in human prostate extract (lane 1), and human spleen extract (lane 2). BORIS at 75KD was detected using rabbit anti-BORIS Antigen Affinity purified polyclonal antibody (Catalog # A04503). The blot was developed using chemiluminescence (ECL) method (Catalog # EK1002).

## 1 Publications Citing This Product

1. PubMed ID: 22648179, A phase 1 study of weekly dosing of trastuzumab emtansine (T<sup>2</sup>DM1) in patients with advanced human epidermal growth factor 2<sup>+</sup>positive breast cancer

Visit [bosterbio.com/anti-boris-antibody-a04503-boster.html](http://bosterbio.com/anti-boris-antibody-a04503-boster.html) to see all 1 publications.

## Submit a product review to Biocompare.com

Submit a review of this product to Biocompare.com to receive a \$20 Amazon.com giftcard! Your reviews help your fellow scientists make the right decisions. Thank you for your contribution.



Anti-BORIS CTCFL Antibody