

Anti-MYH14/Myosin Heavy Chain Antibody

Catalog Number: A04528

About MYH14

Cellular myosin that appears to play a role in cytokinesis, cell shape, and specialized functions such as secretion and capping By similarity.

Leal A., Gene 312:165-171(2003).

Bienvénut W.V., Submitted (NOV-2006) to UniProtKB.

Nagase T., Submitted (JUN-2003) to the EMBL/GenBank/DDBJ databases.

Overview

Product Name	Anti-MYH14/Myosin Heavy Chain Antibody
Reactive Species	Human
Description	Boster Bio Anti-MYH14/Myosin Heavy Chain Antibody (Catalog # A04528). Tested in WB applications. This antibody reacts with Human.
Application	WB
Clonality	Polyclonal
Formulation	Rabbit IgG in phosphate buffered saline (without Mg ²⁺ and Ca ²⁺), pH 7.4, 150mM NaCl, 0.02% sodium azide and 50% glycerol.
Storage Instructions	Store at -20°C for one year. For short term storage and frequent use, store at 4°C for up to one month. Avoid repeated freeze-thaw cycles.
Host	Rabbit
Uniprot ID	Q7Z406

Technical Details

Immunogen	Synthesized peptide derived from internal of human MYH14.
Predicted Reactive Species	Boar, Bovine, Canine, Golden Hamster
Isotype	IgG
Form	Liquid
Concentration	1 mg/ml
Purification	The antibody was affinity-purified from rabbit antiserum by affinity-chromatography using epitope-specific immunogen.
Suggested Dilutions	Dilute the sample so that the expected range of concentrations fall within the detection range of this

kit.

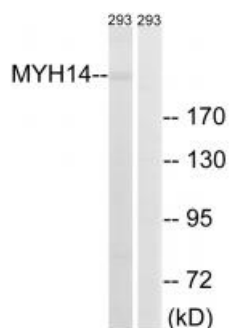
If the expected range of concentration is unknown, a pilot test should be conducted to decide the optimal dilution ratio for your samples.

Some PubMed article(s) citing the expression level of this target are as follows:

Boster Bio's internal QC testing used:

Western blotting: 1:500~1:3000

Anti-MYH14/Myosin Heavy Chain Antibody (A04528) Images



Western blot analysis of extracts from 293 cells, using MYH14 antibody A04528.

Submit a product review to Biocompare.com

Submit a review of this product to Biocompare.com to receive a \$20 Amazon.com giftcard! Your reviews help your fellow scientists make the right decisions. Thank you for your contribution.



Anti-MYH14/Myosin Heavy Chain Antibody