

Anti-GABRB1(Ab-434) Antibody

Catalog Number: A04752

About GABRB1

The gamma-aminobutyric acid (GABA) A receptor is a multisubunit chloride channel that mediates the fastest inhibitory synaptic transmission in the central nervous system. This gene encodes GABA A receptor, beta 1 subunit. It is mapped to chromosome 4p12 in a cluster comprised of genes encoding a 4, a 2 and gamma 1 subunits of the GABA A receptor. Alteration of this gene is implicated in the pathogenetics of schizophrenia.

Collins AL, et al. (2006) Neurogenetics ;7(3):167-174.

Ma DQ, et al. (2005) Am J Hum Genet ;77(3):377-388.

Edenberg HJ, et al. (2004) Am J Hum Genet ;74(4):705-714.

Overview

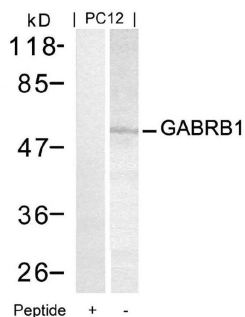
Product Name	Anti-GABRB1(Ab-434) Antibody
Reactive Species	Human, Mouse, Rat
Description	Boster Bio Anti-GABRB1(Ab-434) Antibody (Catalog # A04752). Tested in WB, IHC applications. This antibody reacts with Human, Mouse, Rat.
Application	IHC, WB
Clonality	Polyclonal
Formulation	Supplied at 1.0mg/mL in phosphate buffered saline (without Mg ²⁺ and Ca ²⁺), pH 7.4, 150mM NaCl, 0.02% sodium azide and 50% glycerol.
Storage Instructions	Store at -20°C for one year. For short term storage and frequent use, store at 4°C for up to one month. Avoid repeated freeze-thaw cycles.
Host	Rabbit
Uniprot ID	P18505

Technical Details

Immunogen	Peptide sequence around aa.432~436 (R-A-S-Q-L) derived from Human GABRB1.
Predicted Reactive Species	Boar, Bovine, Canine, Golden Hamster
Isotype	IgG
Form	Liquid
Concentration	1 mg/ml
Purification	Antibodies were produced by immunizing rabbits with synthetic peptide and KLH conjugates.

	Antibodies were purified by affinity-chromatography using epitope-specific peptide.
Suggested Dilutions	<p>Dilute the sample so that the expected range of concentrations fall within the detection range of this kit.</p> <p>If the expected range of concentration is unknown, a pilot test should be conducted to decide the optimal dilution ratio for your samples.</p> <p>Some PubMed article(s) citing the expression level of this target are as follows:</p> <p>Boster Bio's internal QC testing used:</p> <p>Predicted MW: 54kd</p> <p>Western blotting: 1:500~1:1000 IHC 1:50-1:200</p>

Anti-GABRB1(Ab-434) Antibody (A04752) Images



Western blot analysis of extracts from PC12 cells using GABRB1(Ab-434) antibody A04752 and the same antibody preincubated with blocking peptide.

Submit a product review to Biocompare.com

Submit a review of this product to Biocompare.com to receive a \$20 Amazon.com giftcard! Your reviews help your fellow scientists make the right decisions. Thank you for your contribution.



Anti-GABRB1(Ab-434) Antibody