

## Anti-Melanoma-associated antigen D1 Maged1 Antibody

Catalog Number: A05037

### About MAGED1

Involved in the apoptotic response after nerve growth factor (NGF) binding in neuronal cells. Binds p75NTR and antagonizes its association with TrkA, inhibits cell cycle progression, and facilitates p75NTR-mediated apoptosis. May act as a regulator of the function of DLX family members. May regulate p53 transcriptional activity and inhibit cell proliferation. Enhances p53 phosphorylation and accumulation.

Zhao Z,et al.(2002) Sci China C Life Sci.45(4):412-20.

Shen WG,et al.(2007) Cell Commun Adhes.14(1):21-31.

Cheresh DA,et al. (1984) J Biol Chem.259(12):7453-9.

### Overview

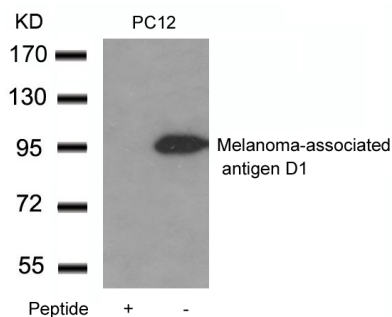
Product Name	Anti-Melanoma-associated antigen D1 Maged1 Antibody
Reactive Species	Human, Mouse, Rat
Description	Boster Bio Anti-Melanoma-associated antigen D1 Maged1 Antibody (Catalog # A05037). Tested in WB applications. This antibody reacts with Human, Mouse, Rat.
Application	WB
Clonality	Polyclonal
Formulation	Supplied at 1.0mg/mL in phosphate buffered saline (without Mg <sup>2+</sup> and Ca <sup>2+</sup> ), pH 7.4, 150mM NaCl, 0.02% sodium azide and 50% glycerol.
Storage Instructions	Store at -20°C for one year. For short term storage and frequent use, store at 4°C for up to one month. Avoid repeated freeze-thaw cycles.
Host	Rabbit
Uniprot ID	Q9QYH6

### Technical Details

Immunogen	Peptide with sequence C-EAEARAEARNRMGIGDE derived from Mouse Melanoma-associated antigen D1.
Predicted Reactive Species	Boar, Bovine, Canine, Golden Hamster
Isotype	IgG
Form	Liquid
Concentration	1 mg/ml

Purification	Antibodies were produced by immunizing rabbits with synthetic peptide and KLH conjugates. Antibodies were purified by affinity-chromatography using epitope-specific peptide.
Suggested Dilutions	Dilute the sample so that the expected range of concentrations fall within the detection range of this kit. If the expected range of concentration is unknown, a pilot test should be conducted to decide the optimal dilution ratio for your samples. Some PubMed article(s) citing the expression level of this target are as follows: Boster Bio's internal QC testing used: Predicted MW: 95kd Western blotting: 1:500~1:1000

## Anti-Melanoma-associated antigen D1 Maged1 Antibody (A05037) Images



Western blot analysis of extracts from PC12 cells using Melanoma-associated antigen D1 antibody A05037 and the same antibody preincubated with blocking peptide.

### Submit a product review to Biocompare.com

Submit a review of this product to Biocompare.com to receive a \$20 Amazon.com giftcard! Your reviews help your fellow scientists make the right decisions. Thank you for your contribution.



Anti-Melanoma-associated antigen D1 Maged1 Antibody