

## Anti-MARK3 Antibody

Catalog Number: A05355

### About MARK3

Involved in the specific phosphorylation of microtubule-associated proteins for tau, MAP2 and MAP4. Phosphorylates CDC25C on 'Ser-216'. Regulates localization and activity of some histone deacetylases by mediating phosphorylation of HDAC7, promoting subsequent interaction between HDAC7 and 14-3-3 and export from the nucleus.

Peng C.Y., Cell Growth Differ. 9:197-208(1998).

Sun T.-Q., Nat. Cell Biol. 3:628-636(2001).

Wissing J., Mol. Cell. Proteomics 6:537-547(2007)

### Overview

Product Name	Anti-MARK3 Antibody
Reactive Species	Human, Mouse, Rat
Description	Boster Bio Anti-MARK3 Antibody (Catalog # A05355). Tested in WB, IHC applications. This antibody reacts with Human, Mouse, Rat.
Application	IHC, WB
Clonality	Polyclonal
Formulation	Rabbit IgG in phosphate buffered saline (without Mg <sup>2+</sup> and Ca <sup>2+</sup> ), pH 7.4, 150mM NaCl, 0.02% sodium azide and 50% glycerol.
Storage Instructions	Store at -20°C for one year. For short term storage and frequent use, store at 4°C for up to one month. Avoid repeated freeze-thaw cycles.
Host	Rabbit
Uniprot ID	P27448

### Technical Details

Immunogen	Synthesized peptide derived from N-terminal of human MARK3.
Predicted Reactive Species	Boar, Bovine, Canine, Golden Hamster
Isotype	IgG
Form	Liquid
Concentration	1 mg/ml
Purification	The antibody was affinity-purified from rabbit antiserum by affinity-chromatography using epitope-

specific immunogen.

**Suggested Dilutions**

Dilute the sample so that the expected range of concentrations fall within the detection range of this kit.

If the expected range of concentration is unknown, a pilot test should be conducted to decide the optimal dilution ratio for your samples.

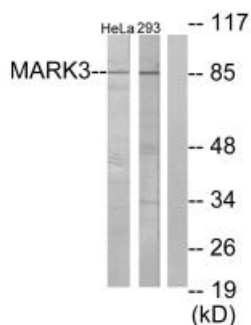
Some PubMed article(s) citing the expression level of this target are as follows:

Boster Bio's internal QC testing used:

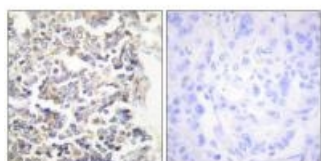
Western blotting: 1:500~1:3000

Immunohistochemistry: 1:50~1:100

## Anti-MARK3 Antibody (A05355) Images



Western blot analysis of extracts from HeLa cells and 293 cells, using MARK3 antibody A05355.



Immunohistochemistry analysis of paraffin-embedded human lung carcinoma tissue using MARK3 antibody A05355.

## Submit a product review to Biocompare.com

Submit a review of this product to Biocompare.com to receive a \$20 Amazon.com giftcard! Your reviews help your fellow scientists make the right decisions. Thank you for your contribution.



Anti-MARK3 Antibody