

Anti-LST8/GBL MLST8 Antibody

Catalog Number: A05357

About MLST8

SmarcAL1 (SWI/SNF-related matrix-associated actin-dependent regulator of chromatin a-like 1) is also known as HARP, HepA Related Protein, HHARP, SMARCA like Protein 1 and SWI/SNF Related. SmarcAL1 is a member of the SWI/SNF family of proteins. Members of this family have helicase and ATPase activities and are thought to regulate transcription of certain genes by altering the chromatin structure around those genes. The encoded protein shows sequence similarity to the E. coli RNA polymerase-binding protein HepA. Mutations in this gene are a cause of Schimke immunoosseous dysplasia (SIOD), an autosomal recessive disorder with the diagnostic features of spondyloepiphyseal dysplasia, renal dysfunction, and T-cell immunodeficiency.

Overview

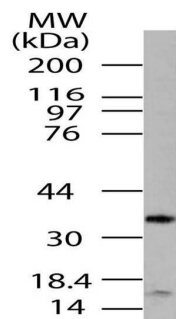
Product Name	Anti-LST8/GBL MLST8 Antibody
Reactive Species	Human
Description	Boster Bio Anti-LST8/GBL MLST8 Antibody (Catalog# A05357). Tested in WB application(s). This antibody reacts with Human.
Application	WB
Clonality	Polyclonal
Formulation	100 ug in 200 ul PBS containing 0.05% BSA and 0.05% sodium azide.
Storage Instructions	Store the antibody at 4°C, stable for 6 months. For long-term storage, store at -20°C. Avoid repeated freeze and thaw cycles.
Host	Rabbit
Uniprot ID	Q9BVC4

Technical Details

Immunogen	A partial length recombinant LST8/GBL protein (amino acids 100-320)
Predicted Reactive Species	Chimpanzee
Cross Reactivity	No cross reactivity with other proteins.
Isotype	Rabbit IgG
Form	Liquid
Concentration	0.5-1mg/ml, actual concentration vary by lot. Use suggested dilution ratio to decide dilution procedure.

Purification	Protein A Chromatography
Suggested Dilutions	<p>Dilute the sample so that the expected range of concentrations fall within the detection range of this kit.</p> <p>If the expected range of concentration is unknown, a pilot test should be conducted to decide the optimal dilution ratio for your samples.</p> <p>Some PubMed article(s) citing the expression level of this target are as follows:</p> <p>Boster Bio's internal QC testing used:</p> <p>Western blot: 1-3 µg/ml</p>

Anti-LST8/GBL MLST8 Antibody (A05357) Images



Western blot analysis of LST8/GBL. Anti-LST8/GBL was used at 1 μ g

Submit a product review to Biocompare.com

Submit a review of this product to Biocompare.com to receive a \$20 Amazon.com giftcard! Your reviews help your fellow scientists make the right decisions. Thank you for your contribution.



Anti-LST8/GBL MLST8 Antibody