

Anti-GTF2H1 Antibody

Catalog Number: A05408

About GTF2H1

Mediates cAMP-dependent signaling triggered by receptor binding to GPCRs. PKA activation regulates diverse cellular processes such as cell proliferation, the cell cycle, differentiation and regulation of microtubule dynamics, chromatin condensation and decondensation, nuclear envelope disassembly and reassembly, as well as regulation of intracellular transport mechanisms and ion flux. Regulates the abundance of compartmentalized pools of its regulatory subunits through phosphorylation of PJA2 which binds and ubiquitinates these subunits, leading to their subsequent proteolysis.

Beebe S.J., Mol. Endocrinol. 4:465-475(1990).

Gregory S.G., Nature 441:315-321(2006).

Wu K.-J., Oncogene 21:7872-7882(2002).

Overview

Product Name	Anti-GTF2H1 Antibody
Reactive Species	Human, Mouse, Rat
Description	Boster Bio Anti-GTF2H1 Antibody catalog # A05408. Tested in WB,ICC/IF applications. This antibody reacts with Human,Mouse,Rat.
Application	IF, ICC, WB
Clonality	Polyclonal
Formulation	Rabbit IgG, 1mg/ml in PBS with 0.02% sodium azide, 50% glycerol, pH7.2
Storage Instructions	Store at -20°C for one year. For short term storage and frequent use, store at 4°C for up to one month. Avoid repeated freeze-thaw cycles.
Host	Rabbit
Uniprot ID	P32780

Technical Details

Immunogen	Synthesized peptide derived from human CRSP77
Predicted Reactive Species	Boar, Bovine, Canine, Golden Hamster
Isotype	IgG
Form	Liquid
Concentration	1 mg/ml

Purification	The antibody was affinity-purified from rabbit antiserum by affinity-chromatography using epitope-specific immunogen and the purity is > 95% (by SDS-PAGE).
Suggested Dilutions	Dilute the sample so that the expected range of concentrations fall within the detection range of this kit. If the expected range of concentration is unknown, a pilot test should be conducted to decide the optimal dilution ratio for your samples. Some PubMed article(s) citing the expression level of this target are as follows: Boster Bio's internal QC testing used: WB: 1:500-1:1000 ICC/IF: 1:50-1:200

Anti-GTF2H1 Antibody (A05408) Images

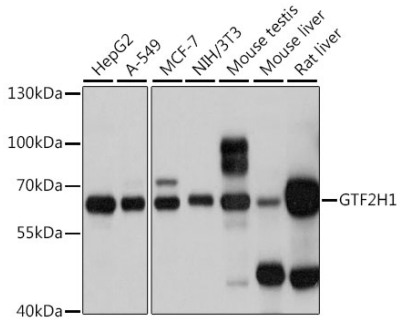


Figure 1. Western blotting validation for Anti-GTF2H1 Antibody A05408

Western blot analysis of extracts of various cells

Submit a product review to Biocompare.com

Submit a review of this product to Biocompare.com to receive a \$20 Amazon.com giftcard! Your reviews help your fellow scientists make the right decisions. Thank you for your contribution.



Anti-GTF2H1 Antibody