

## Anti-ZIC1/2/3 Antibody

Catalog Number: A05537

### About ZIC1

Acts as a transcriptional activator. Involved in neurogenesis. Plays important roles in the early stage of organogenesis of the CNS, as well as during dorsal spinal cord development and maturation of the cerebellum. Involved in the spatial distribution of mossy fiber (MF) neurons within the pontine gray nucleus (PGN). Plays a role in the regulation of MF axon pathway choice. Promotes MF migration towards ipsilaterally-located cerebellar territories. May have a role in shear flow mechanotransduction in osteocytes. Retains nuclear GLI1 and GLI3 in the cytoplasm. Binds to the minimal GLI-consensus sequence 5'-TGGGTGGTC-3' By similarity.

Yokota N., Cancer Res. 56:377-383(1996).

### Overview

Product Name	Anti-ZIC1/2/3 Antibody
Reactive Species	Human, Mouse
Description	Boster Bio Anti-ZIC1/2/3 Antibody (Catalog # A05537). Tested in WB, IHC applications. This antibody reacts with Human, Mouse.
Application	IHC, WB
Clonality	Polyclonal
Formulation	Rabbit IgG in phosphate buffered saline (without Mg <sup>2+</sup> and Ca <sup>2+</sup> ), pH 7.4, 150mM NaCl, 0.02% sodium azide and 50% glycerol.
Storage Instructions	Store at -20°C for one year. For short term storage and frequent use, store at 4°C for up to one month. Avoid repeated freeze-thaw cycles.
Host	Rabbit
Uniprot ID	Q15915

### Technical Details

Immunogen	Synthesized peptide derived from internal of human ZIC1/2/3.
Predicted Reactive Species	Boar, Bovine, Canine, Golden Hamster
Form	Liquid
Concentration	1 mg/ml
Purification	The antibody was affinity-purified from rabbit antiserum by affinity-chromatography using epitope-specific immunogen.

**Suggested Dilutions**

Dilute the sample so that the expected range of concentrations fall within the detection range of this kit.

If the expected range of concentration is unknown, a pilot test should be conducted to decide the optimal dilution ratio for your samples.

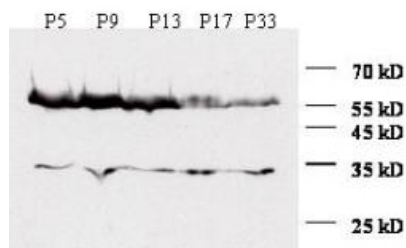
Some PubMed article(s) citing the expression level of this target are as follows:

Boster Bio's internal QC testing used:

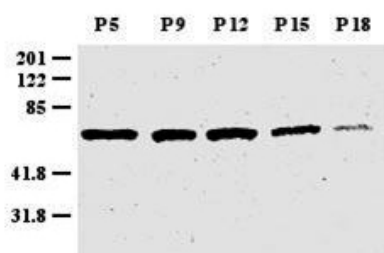
Western blotting: 1:500~1:3000

Immunohistochemistry: 1:50~1:100

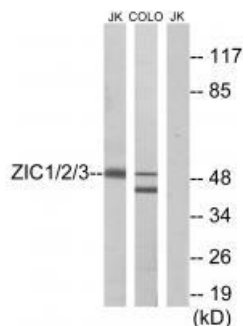
## Anti-ZIC1/2/3 Antibody (A05537) Images



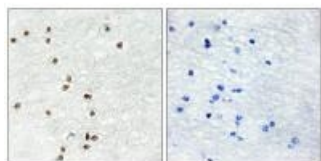
Western blot analysis of Zic1 expression in mouse cerebellum extracts at various time points. Zic1 was detected using rabbit anti-Zic1 ion exchange chromatography purified polyclonal antibody (Catalog #A05537) at 1:5000. HRP conjugated anti-Rabbit IgG (Chemicon) was used at a 1,000 dilution. Personnel communication, K.H. Herzog.



Western blot analysis of Zic1 expression in mouse cerebellum extract. Protein extracts were prepared from mouse cerebellum between postnatal day 5 (P5) and P18, as indicated above the lanes. Zic1 was detected using rabbit anti-Zic1 ion exchange chromatography purified polyclonal antibody (Catalog #A05537). Personnel communication, C. Kurschner.



Western blot analysis of extracts from Jurkat cells and COLO cells, using ZIC1/2/3 antibody A05537.



Immunohistochemistry analysis of paraffin-embedded human brain tissue using ZIC1/2/3 antibody A05537.

**Submit a product review to Biocompare.com**

Submit a review of this product to Biocompare.com to receive a \$20 Amazon.com giftcard! Your reviews help your fellow scientists make the right decisions. Thank you for your contribution.

