

Anti-SLC9A3R2/Nherf 2 Antibody

Catalog Number: A05624-1

About SLC9A3R2

Scaffold protein that connects plasma membrane proteins with members of the ezrin/moesin/radixin family and thereby helps to link them to the actin cytoskeleton and to regulate their surface expression. Necessary for cAMP-mediated phosphorylation and inhibition of SLC9A3. May also act as scaffold protein in the nucleus.

Poulat F., J. Biol. Chem. 272:7167-7172(1997) [PubMed: 9054412].

Reczek D., J. Cell Biol. 139:169-179(1997) [PubMed: 9314537].

Yun C.H.C., Proc. Natl. Acad. Sci. U.S.A. 94:3010-3015(1997) [PubMed: 9096337].

Overview

Product Name	Anti-SLC9A3R2/Nherf 2 Antibody
Reactive Species	Human, Mouse, Rat
Description	Boster Bio Anti-SLC9A3R2/Nherf 2 Antibody (Catalog # A05624-1). Tested in WB applications. This antibody reacts with Human, Mouse, Rat.
Application	WB
Clonality	Polyclonal
Formulation	Rabbit IgG in phosphate buffered saline (without Mg ²⁺ and Ca ²⁺), pH 7.4, 150mM NaCl, 0.02% sodium azide and 50% glycerol.
Storage Instructions	Store at -20°C for one year. For short term storage and frequent use, store at 4°C for up to one month. Avoid repeated freeze-thaw cycles.
Host	Rabbit
Uniprot ID	Q15599

Technical Details

Immunogen	Synthesized peptide derived from internal of human SLC9A3R2.
Predicted Reactive Species	Boar, Bovine, Canine, Golden Hamster
Isotype	IgG
Form	Liquid
Concentration	1 mg/ml
Purification	The antibody was affinity-purified from rabbit antiserum by affinity-chromatography using epitope-

specific immunogen.

Suggested Dilutions

Dilute the sample so that the expected range of concentrations fall within the detection range of this kit.

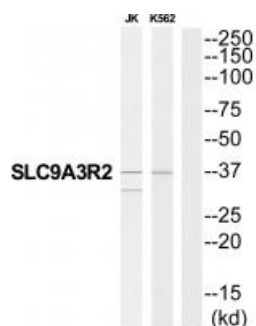
If the expected range of concentration is unknown, a pilot test should be conducted to decide the optimal dilution ratio for your samples.

Some PubMed article(s) citing the expression level of this target are as follows:

Boster Bio's internal QC testing used:

Western blotting: 1:500~1:3000

Anti-SLC9A3R2/Nherf 2 Antibody (A05624-1) Images



Western blot analysis of extracts from JK cells and K562 cells, using SLC9A3R2 antibody A05624-1.

Submit a product review to Biocompare.com

Submit a review of this product to Biocompare.com to receive a \$20 Amazon.com giftcard! Your reviews help your fellow scientists make the right decisions. Thank you for your contribution.



Anti-SLC9A3R2/Nherf 2 Antibody