

Anti-Ras-related protein Rab-31 RAB31 Antibody

Catalog Number: A05883

About RAB31

The small GTPases Rab are key regulators of intracellular membrane trafficking, from the formation of transport vesicles to their fusion with membranes. Rabs cycle between an inactive GDP-bound form and an active GTP-bound form that is able to recruit to membranes different set of downstream effectors directly responsible for vesicle formation, movement, tethering and fusion. Required for the integrity and for normal function of the Golgi apparatus and the trans-Golgi network. Plays a role in insulin-stimulated translocation of GLUT4 to the cell membrane. Plays a role in M6PR transport from the trans-Golgi network to endosomes. Plays a role in the internalization of EGFR from the cell membrane into endosomes. Plays a role in the maturation of phagosomes that engulf pathogens, such as S.aureus and M.tuberculosis.

Chen D., Gene 174:129-134(1996) [PubMed: 8863739].

Bao X., Eur. J. Biochem. 269:259-271(2002) [PubMed: 11784320].

Ota T., Nat. Genet. 36:40-45(2004) [PubMed: 14702039].<

Overview

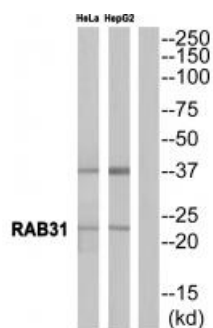
Product Name	Anti-Ras-related protein Rab-31 RAB31 Antibody
Reactive Species	Human, Mouse, Rat
Description	Boster Bio Anti-Ras-related protein Rab-31 RAB31 Antibody (Catalog # A05883). Tested in WB applications. This antibody reacts with Human, Mouse, Rat.
Application	WB
Clonality	Polyclonal
Formulation	Rabbit IgG in phosphate buffered saline (without Mg ²⁺ and Ca ²⁺), pH 7.4, 150mM NaCl, 0.02% sodium azide and 50% glycerol.
Storage Instructions	Store at -20°C for one year. For short term storage and frequent use, store at 4°C for up to one month. Avoid repeated freeze-thaw cycles.
Host	Rabbit
Uniprot ID	Q13636

Technical Details

Immunogen	Synthesized peptide derived from internal of human RAB31.
Isotype	IgG
Form	Liquid
Concentration	1 mg/ml

Purification	The antibody was affinity-purified from rabbit antiserum by affinity-chromatography using epitope-specific immunogen.
Suggested Dilutions	<p>Dilute the sample so that the expected range of concentrations fall within the detection range of this kit.</p> <p>If the expected range of concentration is unknown, a pilot test should be conducted to decide the optimal dilution ratio for your samples.</p> <p>Some PubMed article(s) citing the expression level of this target are as follows:</p> <p>Boster Bio's internal QC testing used:</p> <p>Western blotting: 1:500~1:3000</p>

Anti-Ras-related protein Rab-31 RAB31 Antibody (A05883) Images



Western blot analysis of extracts from HeLa cells and HepG2 cells, using RAB31 antibody A05883.

Submit a product review to Biocompare.com

Submit a review of this product to Biocompare.com to receive a \$20 Amazon.com giftcard! Your reviews help your fellow scientists make the right decisions. Thank you for your contribution.



Anti-Ras-related protein Rab-31 RAB31 Antibody