

## Anti-NKp44 NCR2 Antibody

Catalog Number: A05962

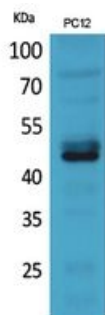
### Overview

Product Name	Anti-NKp44 NCR2 Antibody
Reactive Species	Human
Description	Boster Bio Anti-NKp44 NCR2 Antibody catalog # A05962. Tested in IHC-P, WB applications. This antibody reacts with Human.
Application	IHC-P, WB
Clonality	Polyclonal
Formulation	Liquid in PBS containing 50% glycerol, 0.5% BSA and 0.02% sodium azide.
Storage Instructions	Store at -20°C for one year. For short term storage and frequent use, store at 4°C for up to one month. Avoid repeated freeze-thaw cycles.
Host	Rabbit
Uniprot ID	O95944

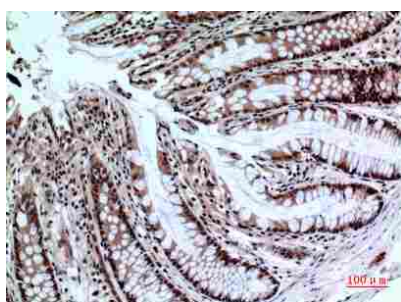
### Technical Details

Immunogen	Synthesized peptide derived from the Internal region of human NKp44.
Predicted Reactive Species	Bovine, Canine, Equine, Guinea Pig, Rabbit
Isotype	IgG
Form	Liquid
Purification	Immunogen affinity purified
Suggested Dilutions	<p>Dilute the sample so that the expected range of concentrations fall within the detection range of this kit.</p> <p>If the expected range of concentration is unknown, a pilot test should be conducted to decide the optimal dilution ratio for your samples.</p> <p>Some PubMed article(s) citing the expression level of this target are as follows:</p> <p>Boster Bio's internal QC testing used:</p> <p>WB, 1:500-1:2000</p> <p>IHC-P, 1:100-1:300</p>

## Anti-NKp44 NCR2 Antibody (A05962) Images



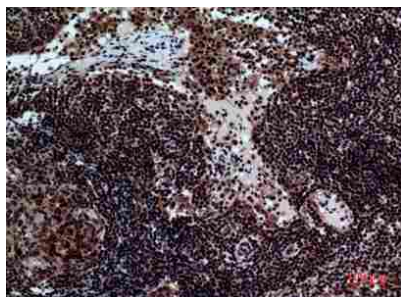
Western Blot (WB) analysis of PC-12 cells using NKp44 Polyclonal antibody.



Immunohistochemistry (IHC) analysis of paraffin-embedded Human Colon, antibody was diluted at 1:100.



Immunohistochemistry (IHC) analysis of paraffin-embedded Human Colon, antibody was diluted at 1:100.



Immunohistochemistry (IHC) analysis of paraffin-embedded Human Lymph Nodes, antibody was diluted at 1:100.

## Submit a product review to Biocompare.com

Submit a review of this product to Biocompare.com to receive a \$20 Amazon.com giftcard! Your reviews help your fellow scientists make the right decisions. Thank you for your contribution.



Anti-NKp44 NCR2 Antibody