

## Anti-POLG2 Antibody

Catalog Number: A06012

### About POLG2

Mitochondrial polymerase processivity subunit. Stimulates the polymerase and exonuclease activities, and increases the processivity of the enzyme. Binds to ss-DNA.

Lim S.E., J. Biol. Chem. 274:38197-38203(1999).

Johnson A.A., Biochemistry 39:1702-1708(2000).

### Overview

Product Name	Anti-POLG2 Antibody
Reactive Species	Human, Mouse
Description	Boster Bio Anti-POLG2 Antibody (Catalog # A06012). Tested in IHC applications. This antibody reacts with Human, Mouse.
Application	IHC
Clonality	Polyclonal
Formulation	Rabbit IgG in phosphate buffered saline (without Mg <sup>2+</sup> and Ca <sup>2+</sup> ), pH 7.4, 150mM NaCl, 0.02% sodium azide and 50% glycerol.
Storage Instructions	Store at -20°C for one year. For short term storage and frequent use, store at 4°C for up to one month. Avoid repeated freeze-thaw cycles.
Host	Rabbit
Uniprot ID	Q9UHN1

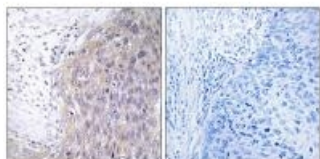
### Technical Details

Immunogen	Synthesized peptide derived from internal of human POLG2.
Isotype	IgG
Form	Liquid
Concentration	1 mg/ml
Purification	The antibody was affinity-purified from rabbit antiserum by affinity-chromatography using epitope-specific immunogen.
Suggested Dilutions	Dilute the sample so that the expected range of concentrations fall within the detection range of this kit. If the expected range of concentration is unknown, a pilot test should be conducted to decide the

optimal dilution ratio for your samples.  
Some PubMed article(s) citing the expression level of this target are as follows:  
Boster Bio's internal QC testing used:  
Immunohistochemistry: 1:50~1:100

## Anti-POLG2 Antibody (A06012) Images

---



Immunohistochemistry analysis of paraffin-embedded human cervix carcinoma tissue using POLG2 antibody A06012.

---

## Submit a product review to Biocompare.com

Submit a review of this product to Biocompare.com to receive a \$20 Amazon.com giftcard! Your reviews help your fellow scientists make the right decisions. Thank you for your contribution.



Anti-POLG2 Antibody