

## Anti-Cyclin T2 CCNT2 Antibody

Catalog Number: A06015

### About CCNT2

Cyclin T2 is a ubiquitously expressed nuclear protein that is a member of the highly conserved cyclin family, whose members are characterized by a dramatic periodicity in protein abundance through the cell cycle. Cyclins function as regulators of CDK kinases. Different cyclins exhibit distinct expression and degradation patterns that contribute to the temporal coordination of each mitotic event. This cyclin and its kinase partner CDK9 were found to be subunits of the transcription elongation factor p-TEFb. The p-TEFb complex containing this cyclin was reported to interact with, and act as a negative regulator of human immunodeficiency virus type 1 (HIV-1) Tat protein. Anti-Cyclin T2 Antibody is useful for researchers interested in HIV research, Gene expression, and cell cycle pathways.

### Overview

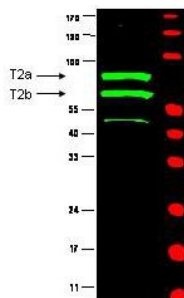
Product Name	Anti-Cyclin T2 CCNT2 Antibody
Reactive Species	Human
Description	Boster Bio Anti-Cyclin T2 CCNT2 Antibody (Catalog # A06015). Tested in ELISA, WB applications. This antibody reacts with Human.
Application	ELISA, WB
Clonality	Polyclonal
Formulation	0.01% (w/v) Sodium Azide
Storage Instructions	Store vial at -20°C prior to opening. Aliquot contents and freeze at -20°C or below for extended storage. Avoid cycles of freezing and thawing. Centrifuge product if not completely clear after standing at room temperature. This product is stable for several weeks at 4°C as an undiluted liquid. Dilute only prior to immediate use. Expiration date is one (1) year from date of opening. (Ship on dry ice.)
Host	Rabbit
Uniprot ID	O60583

### Technical Details

Immunogen	This antibody was prepared from whole rabbit serum produced by repeated immunizations with a recombinant protein corresponding to amino acids 1-584 of human Cyclin T2a protein.
Predicted Reactive Species	Bovine, Canine, Equine, Guinea Pig, Pig, Rabbit
Isotype	Antiserum
Form	Liquid (sterile filtered)
Concentration	85 mg/mL by Refractometry

Purification	<p>This antibody is directed against human Cyclin T2 proteins and was prepared from monospecific antiserum by delipidation and defibrination. Antiserum will specifically react with proteins 74 and 81 kDa in size corresponding to isoforms of Cyclin T2 protein by western blot. A protein:protein BLAST analysis was used to suggest cross-reactivity with Cyclin T2a and T2b from dog (96%), bovine (93%), mouse (88%) and rat (85%) sources based on high homology with the full length protein. Reactivity against homologues from other sources is not known.</p>
Suggested Dilutions	<p>Dilute the sample so that the expected range of concentrations fall within the detection range of this kit.</p> <p>If the expected range of concentration is unknown, a pilot test should be conducted to decide the optimal dilution ratio for your samples.</p> <p>Some PubMed article(s) citing the expression level of this target are as follows:</p> <p>Boster Bio's internal QC testing used:</p> <p>ELISA: 1:5,000 - 1:20,000</p> <p>IP: 1:100</p> <p>WB: 1:500 - 1:2,000</p>

## Anti-Cyclin T2 CCNT2 Antibody (A06015) Images



Western blot analysis of Cyclin T2 expression in HeLa whole cell lysate. Cyclin T2a and T2b was detected using rabbit anti-Cyclin T2 polyclonal antibody (Catalog # A06015) at 1:500. IRDye00 fluorescence image was captured using the Odyssey

## Submit a product review to Biocompare.com

Submit a review of this product to Biocompare.com to receive a \$20 Amazon.com giftcard! Your reviews help your fellow scientists make the right decisions. Thank you for your contribution.



Anti-Cyclin T2 CCNT2 Antibody