

## Anti-CLNS1A/PicIn Antibody

Catalog Number: A06086

### About CLNS1A

Chaperone that regulates the assembly of spliceosomal U1, U2, U4 and U5 small nuclear ribonucleoproteins (snRNPs), the building blocks of the spliceosome. Thereby, plays an important role in the splicing of cellular pre-mRNAs. Most spliceosomal snRNPs contain a common set of Sm proteins SNRPB, SNRPD1, SNRPD2, SNRPD3, SNRPE, SNRPF and SNRPG that assemble in a heptameric protein ring on the Sm site of the small nuclear RNA to form the core snRNP. In the cytosol, the Sm proteins SNRPD1, SNRPD2, SNRPE, SNRPF and SNRPG are trapped in an inactive 6S pICln-Sm complex by the chaperone CLNS1A that controls the assembly of the core snRNP. Dissociation by the SMN complex of CLNS1A from the trapped Sm proteins and their transfer to an SMN-Sm complex triggers the assembly of core snRNPs and their transport to the nucleus. May also indirectly participate in cellular volume control by activation of a swelling-induced chloride conductance pathway.

Buyse G., Biochem. Biophys. Res. Commun. 218:822-827(1996).

Anquita J., Biochem. Biophys. Res. Commun. 208:89-95(1995).

Lamb F.S., Submitted (JUL-1996) to the EMBL/GenBank/DBJ databases.

### Overview

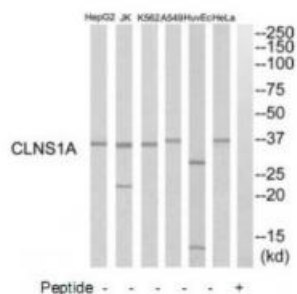
Product Name	Anti-CLNS1A/PicIn Antibody
Reactive Species	Human
Description	Boster Bio Anti-CLNS1A/PicIn Antibody (Catalog # A06086). Tested in WB applications. This antibody reacts with Human.
Application	WB
Clonality	Polyclonal
Formulation	Rabbit IgG in phosphate buffered saline (without Mg <sup>2+</sup> and Ca <sup>2+</sup> ), pH 7.4, 150mM NaCl, 0.02% sodium azide and 50% glycerol.
Storage Instructions	Store at -20°C for one year. For short term storage and frequent use, store at 4°C for up to one month. Avoid repeated freeze-thaw cycles.
Host	Rabbit
Uniprot ID	P54105

### Technical Details

Immunogen	Synthesized peptide derived from C-terminal of human CLNS1A.
Isotype	IgG
Form	Liquid

Concentration	1 mg/ml
Purification	The antibody was affinity-purified from rabbit antiserum by affinity-chromatography using epitope-specific immunogen.
Suggested Dilutions	<p>Dilute the sample so that the expected range of concentrations fall within the detection range of this kit.</p> <p>If the expected range of concentration is unknown, a pilot test should be conducted to decide the optimal dilution ratio for your samples.</p> <p>Some PubMed article(s) citing the expression level of this target are as follows:</p> <p>Boster Bio's internal QC testing used:</p> <p>Western blotting: 1:500~1:3000</p>

## Anti-CLNS1A/PicIn Antibody (A06086) Images



Western blot analysis of extracts from HuvEc cells, K562 cells, HeLa cells, HepG2 cells, A549 cells and Jurkat cells, using CLNS1A antibody A06086.

## Submit a product review to Biocompare.com

Submit a review of this product to Biocompare.com to receive a \$20 Amazon.com giftcard! Your reviews help your fellow scientists make the right decisions. Thank you for your contribution.



Anti-CLNS1A/PicIn Antibody