

## Anti-RSK3/RPS6KA2 Antibody Picoband™

Catalog Number: A06142-1

### About RPS6KA2

Ribosomal protein S6 kinase alpha-2 is an enzyme that in humans is encoded by the RPS6KA2 gene. It is mapped to 6q27. This gene encodes a member of the RSK (ribosomal S6 kinase) family of serine/threonine kinases. This kinase contains two non-identical kinase catalytic domains and phosphorylates various substrates, including members of the mitogen-activated kinase (MAPK) signalling pathway. The activity of this protein has been implicated in controlling cell growth and differentiation. Alternative splice variants, encoding different isoforms, have been characterized.

### Overview

Product Name	Anti-RSK3/RPS6KA2 Antibody Picoband™
Reactive Species	Human, Mouse, Rat
Description	Boster Bio Anti-RSK3/RPS6KA2 Antibody Picoband™ catalog # A06142-1. Tested in ELISA, IF, IHC, ICC, WB applications. This antibody reacts with Human, Mouse, Rat.
Application	ELISA, IF, IHC, ICC, WB
Clonality	Polyclonal
Formulation	Each vial contains 4mg Trehalose, 0.9mg NaCl, 0.2mg Na <sub>2</sub> HPO <sub>4</sub> , 0.05mg NaN <sub>3</sub> .
Storage Instructions	Store at -20°C for one year from date of receipt. After reconstitution, at 4°C for one month. It can also be aliquotted and stored frozen at -20°C for six months. Avoid repeated freeze-thaw cycles.
Host	Rabbit
Uniprot ID	Q15349

### Technical Details

Immunogen	E. coli-derived human RSK3 recombinant protein (Position: H658-L733).
Recommended Detection Systems	Boster recommends Enhanced Chemiluminescent Kit with anti-Rabbit IgG (EK1002) for Western blot, and HRP Conjugated anti-Rabbit IgG Super Vision Assay Kit (SV0002-1) for IHC(P) and ICC.
Cross Reactivity	No cross-reactivity with other proteins.
Isotype	Rabbit IgG
Form	Lyophilized
Concentration	Adding 0.2 ml of distilled water will yield a concentration of 500 ug/ml.
Suggested Dilutions	Dilute the sample so that the expected range of concentrations fall within the detection range of this kit. If the expected range of concentration is unknown, a pilot test should be conducted to decide the

optimal dilution ratio for your samples.  
Some PubMed article(s) citing the expression level of this target are as follows:  
Boster Bio's internal QC testing used:  
Western blot, 0.1-0.5ug/ml  
Immunohistochemistry (Paraffin-embedded Section), 0.5-1ug/ml  
Immunocytochemistry/Immunofluorescence, 2ug/ml  
Direct ELISA, 0.1-0.5ug/ml

## Anti-RSK3/RPS6KA2 Antibody Picoband™ (A06142-1) Images

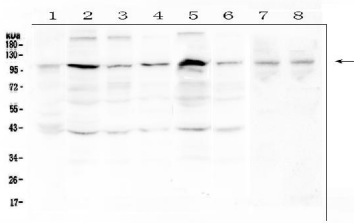


Figure 1. Western blot analysis of RSK3 using anti-RSK3 antibody (A06142-1).

Electrophoresis was performed on a 5-20% SDS-PAGE gel at 70V (Stacking gel) / 90V (Resolving gel) for 2-3 hours. The sample well of each lane was loaded with 50ug of sample under reducing conditions.

Lane 1: human placenta tissue lysates,  
Lane 2: human Hela whole cell lysate,  
Lane 3: human PC-3 whole cell lysate,  
Lane 4: human A431 whole cell lysate,  
Lane 5: human K562 whole cell lysate,  
Lane 6: human PANC-1 whole cell lysate,  
Lane 7: rat testis tissue lysates,  
Lane 8: mouse testis tissue lysates.

After Electrophoresis, proteins were transferred to a Nitrocellulose membrane at 150mA for 50-90 minutes. Blocked the membrane with 5% Non-fat Milk/ TBS for 1.5 hour at RT. The membrane was incubated with rabbit anti-RSK3 antigen affinity purified polyclonal antibody (Catalog # A06142-1) at 0.5 ug/mL overnight at 4°C, then washed with TBS-0.1%Tween 3 times with 5 minutes each and probed with a goat anti-rabbit IgG-HRP secondary antibody at a dilution of 1:10000 for 1.5 hour at RT. The signal is developed using an Enhanced Chemiluminescent detection (ECL) kit (Catalog # EK1002) with Tanon 5200 system. A specific band was detected for RSK3 at approximately 90-100KD. The expected band size for RSK3 is at 83KD.

## Submit a product review to Biocompare.com

Submit a review of this product to Biocompare.com to receive a \$20 Amazon.com giftcard! Your reviews help your fellow scientists make the right decisions. Thank you for your contribution.



Anti-RSK3/RPS6KA2 Antibody™