

Anti-RPS13/Ribosomal Protein S13 Antibody

Catalog Number: A06221

About RPS13

Ribosomes, the organelles that catalyze protein synthesis, consist of a small 40S subunit and a large 60S subunit. Together these subunits are composed of 4 RNA species and approximately 80 structurally distinct proteins. This gene encodes a ribosomal protein that is a component of the 40S subunit. The protein belongs to the S15P family of ribosomal proteins. It is located in the cytoplasm. The protein has been shown to bind to the 5.8S rRNA in rat. The gene product of the E. coli ortholog (ribosomal protein S15) functions at early steps in ribosome assembly. This gene is co-transcribed with two U14 small nucleolar RNA genes, which are located in its third and fifth introns. As is typical for genes encoding ribosomal proteins, there are multiple processed pseudogenes of this gene dispersed through the genome.

Rush J., Nat. Biotechnol. 23:94-101(2005).

Olsen J.V., Cell 127:635-648(2006).

Kenmochi N., Biochem. Biophys. Res. Commun. 228:371-374(1996).

Overview

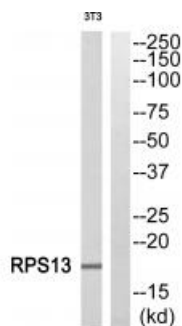
Product Name	Anti-RPS13/Ribosomal Protein S13 Antibody
Reactive Species	Human, Mouse
Description	Boster Bio Anti-RPS13/Ribosomal Protein S13 Antibody (Catalog # A06221). Tested in WB, IHC applications. This antibody reacts with Human, Mouse.
Application	IHC, WB
Clonality	Polyclonal
Formulation	Rabbit IgG in phosphate buffered saline (without Mg ²⁺ and Ca ²⁺), pH 7.4, 150mM NaCl, 0.02% sodium azide and 50% glycerol.
Storage Instructions	Store at -20°C for one year. For short term storage and frequent use, store at 4°C for up to one month. Avoid repeated freeze-thaw cycles.
Host	Rabbit
Uniprot ID	P62277

Technical Details

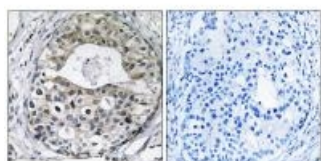
Immunogen	Synthesized peptide derived from internal of human RPS13.
Isotype	IgG
Form	Liquid
Concentration	1 mg/ml

Purification	The antibody was affinity-purified from rabbit antiserum by affinity-chromatography using epitope-specific immunogen.
Suggested Dilutions	<p>Dilute the sample so that the expected range of concentrations fall within the detection range of this kit.</p> <p>If the expected range of concentration is unknown, a pilot test should be conducted to decide the optimal dilution ratio for your samples.</p> <p>Some PubMed article(s) citing the expression level of this target are as follows:</p> <p>Boster Bio's internal QC testing used:</p> <p>Western blotting: 1:500~1:3000</p> <p>Immunohistochemistry: 1:50~1:100</p>

Anti-RPS13/Ribosomal Protein S13 Antibody (A06221) Images



Western blot analysis of extracts from 3T3 cells, using RPS13 antibody A06221.



Immunohistochemistry analysis of paraffin-embedded human breast carcinoma tissue using RPS13 antibody A06221.

Submit a product review to Biocompare.com

Submit a review of this product to Biocompare.com to receive a \$20 Amazon.com giftcard! Your reviews help your fellow scientists make the right decisions. Thank you for your contribution.



Anti-RPS13/Ribosomal Protein S13 Antibody