

Anti-CA14/Ca Xiv Antibody

Catalog Number: A06411

About CA14

Reversible hydration of carbon dioxide.

Fujikawa-Adachi K., Genomics 61:74-81(1999).

Clark H.F., Genome Res. 13:2265-2270(2003).

Ota T., Nat. Genet. 36:40-45(2004).

Overview

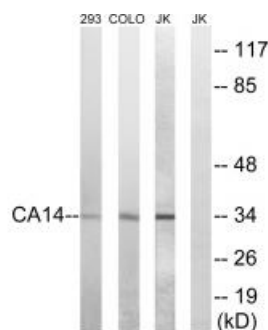
Product Name	Anti-CA14/Ca Xiv Antibody
Reactive Species	Human
Description	Boster Bio Anti-CA14/Ca Xiv Antibody (Catalog # A06411). Tested in WB applications. This antibody reacts with Human.
Application	WB
Clonality	Polyclonal
Formulation	Rabbit IgG in phosphate buffered saline (without Mg ²⁺ and Ca ²⁺), pH 7.4, 150mM NaCl, 0.02% sodium azide and 50% glycerol.
Storage Instructions	Store at -20°C for one year. For short term storage and frequent use, store at 4°C for up to one month. Avoid repeated freeze-thaw cycles.
Host	Rabbit
Uniprot ID	Q9ULX7

Technical Details

Immunogen	Synthesized peptide derived from internal of human CA14.
Isotype	IgG
Form	Liquid
Concentration	1 mg/ml
Purification	The antibody was affinity-purified from rabbit antiserum by affinity-chromatography using epitope-specific immunogen.
Suggested Dilutions	Dilute the sample so that the expected range of concentrations fall within the detection range of this kit. If the expected range of concentration is unknown, a pilot test should be conducted to decide the

optimal dilution ratio for your samples.
Some PubMed article(s) citing the expression level of this target are as follows:
Boster Bio's internal QC testing used:
Western blotting: 1:500~1:3000

Anti-CA14/Ca Xiv Antibody (A06411) Images



Western blot analysis of extracts from 293 cells, COLO cells, and Jurkat cells, using CA14 antibody A06411.

Submit a product review to Biocompare.com

Submit a review of this product to Biocompare.com to receive a \$20 Amazon.com giftcard! Your reviews help your fellow scientists make the right decisions. Thank you for your contribution.



Anti-CA14/Ca Xiv Antibody