

Anti-Myosin MYL9 Antibody

Catalog Number: A06446

About MYL12A

Myosin is the major component of thick muscle filaments, and is a long asymmetric molecule containing a globular head and a long tail. The molecule consists of two heavy chains each ~200,000 daltons, and four light chains each ~16,000 - 21,000 daltons. Activation of smooth and cardiac muscle primarily involves pathways that increase calcium and myosin phosphorylation resulting in contraction. Myosin light chain phosphatase acts to regulate muscle contraction by dephosphorylating activated myosin light chain. The selected peptide sequence used to generate the polyclonal antibody is located near the amino terminal end of the polypeptide corresponding to the smooth/non-muscle form of myosin regulatory light chain found in cardiac myocytes in addition to smooth and non-muscle cells.

Overview

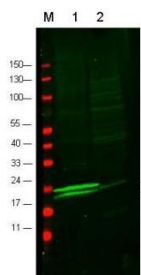
Product Name	Anti-Myosin MYL9 Antibody
Reactive Species	Mouse, Rat
Description	Boster Bio Anti-Myosin MYL9 Antibody (Catalog # A06446). Tested in ELISA, WB applications. This antibody reacts with Mouse, Rat.
Application	ELISA, WB
Clonality	Polyclonal
Formulation	0.02 M Potassium Phosphate, 0.15 M Sodium Chloride, pH 7.2, 0.01% (w/v) Sodium Azide
Storage Instructions	Store vial at -20°C prior to opening. Aliquot contents and freeze at -20°C or below for extended storage. Avoid cycles of freezing and thawing. Centrifuge product if not completely clear after standing at room temperature. This product is stable for several weeks at 4°C as an undiluted liquid. Dilute only prior to immediate use. Expiration date is one (1) year from date of opening. (Ship on dry ice.)
Host	Rabbit
Uniprot ID	J3QRS3

Technical Details

Immunogen	This affinity purified antibody was prepared from whole rabbit serum produced by repeated immunizations with a synthetic peptide corresponding to amino acids aa 10-35 of human myosin light chain protein.
Predicted Reactive Species	Canine, Chimpanzee, Orangutan
Isotype	IgG
Form	Liquid (sterile filtered)

Concentration	0.98mg/mL by UV absorbance at 280 nm
Purification	This affinity purified antibody is directed against the regulatory light chain of smooth and non-muscle myosin. The antibody detects both unphosphorylated and monophosphorylated forms of the protein. The product was affinity purified from monospecific antiserum by immunoaffinity purification. Cross-reactivity is expected with myosin light chain from human, mouse and rat sources. Reactivity with the protein from other species has not been determined; however, the sequence of the immunogen is nearly identical in mammalian and avian species. BLAST search analysis was used to determine that the smooth and non-muscle forms of myosin regulatory light chain have identical sequences. Cross-reactivity is expected.
Suggested Dilutions	<p>Dilute the sample so that the expected range of concentrations fall within the detection range of this kit.</p> <p>If the expected range of concentration is unknown, a pilot test should be conducted to decide the optimal dilution ratio for your samples.</p> <p>Some PubMed article(s) citing the expression level of this target are as follows:</p> <p>Boster Bio's internal QC testing used:</p> <p>ELISA: 1:10,000 - 1:70,000</p> <p>IHC: User optimized</p> <p>IP: 1:100</p> <p>WB: 1:500 - 1:2,000</p>

Anti-Myosin MYL9 Antibody (A06446) Images



Western blot analysis of Myosin expression in vascular myosin (rat aorta, lane 1) but not cardiac myosin (mouse heart, lane 2). Arrowheads indicate the detection of both mono-phosphorylated (upper) and unphosphorylated (lower) forms of the protein. Molecular weight estimation was made by comparison to prestained MW markers in lane M (700 nm channel, red). Myosin was detected using rabbit anti-Myosin Antigen Affinity purified polyclonal antibody (Catalog # A06446) at 1:600. The blot was developed using chemiluminescence (ECL) method (Catalog # EK1002).

Submit a product review to Biocompare.com

Submit a review of this product to Biocompare.com to receive a \$20 Amazon.com giftcard! Your reviews help your fellow scientists make the right decisions. Thank you for your contribution.



Anti-Myosin MYL9 Antibody