

## Anti-Cysteine protease ATG4A ATG4A Antibody

Catalog Number: A06539-1

### About ATG4A

Cysteine protease required for the cytoplasm to vacuole transport (Cvt) and autophagy. Cleaves the C-terminal amino acid of ATG8 family proteins to reveal a C-terminal glycine. Exposure of the glycine at the C-terminus is essential for ATG8 proteins conjugation to phosphatidylethanolamine (PE) and insertion to membranes, which is necessary for autophagy. Preferred substrate is GABARAPL2 followed by MAP1LC3A and GABARAP. Has also an activity of delipidating enzyme for the PE-conjugated forms.

Marino G., J. Biol. Chem. 278:3671-3678(2003).

Kabeya Y., J. Cell Sci. 117:2805-2812(2004).

Ross M.T., Nature 434:325-337(2005)

### Overview

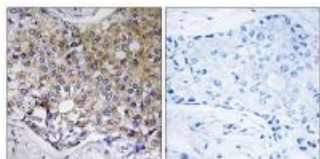
Product Name	Anti-Cysteine protease ATG4A ATG4A Antibody
Reactive Species	Human, Mouse
Description	Boster Bio Anti-Cysteine protease ATG4A ATG4A Antibody (Catalog # A06539-1). Tested in IHC, IF applications. This antibody reacts with Human, Mouse.
Application	IF, IHC
Clonality	Polyclonal
Formulation	Rabbit IgG in phosphate buffered saline (without Mg <sup>2+</sup> and Ca <sup>2+</sup> ), pH 7.4, 150mM NaCl, 0.02% sodium azide and 50% glycerol.
Storage Instructions	Store at -20°C for one year. For short term storage and frequent use, store at 4°C for up to one month. Avoid repeated freeze-thaw cycles.
Host	Rabbit
Uniprot ID	Q8WYN0

### Technical Details

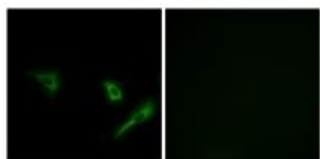
Immunogen	Synthesized peptide derived from C-terminal of human ATG4A.
Predicted Reactive Species	Chimpanzee, Drosophila, Macaque
Cross Reactivity	No cross reactivity with other proteins.
Isotype	IgG
Form	Liquid

Concentration	1 mg/ml
Purification	The antibody was affinity-purified from rabbit antiserum by affinity-chromatography using epitope-specific immunogen.
Suggested Dilutions	<p>Dilute the sample so that the expected range of concentrations fall within the detection range of this kit.</p> <p>If the expected range of concentration is unknown, a pilot test should be conducted to decide the optimal dilution ratio for your samples.</p> <p>Some PubMed article(s) citing the expression level of this target are as follows:</p> <p>Boster Bio's internal QC testing used:</p> <p>Immunohistochemistry: 1:50~1:100</p> <p>Immunofluorescence: 1:100~1:500</p>

## Anti-Cysteine protease ATG4A ATG4A Antibody (A06539-1) Images



Immunohistochemistry analysis of paraffin-embedded human breast carcinoma tissue using ATG4A antibody A06539-1.



Immunofluorescence analysis of A549 cells, using ATG4A antibody A06539-1.

### Submit a product review to Biocompare.com

Submit a review of this product to Biocompare.com to receive a \$20 Amazon.com giftcard! Your reviews help your fellow scientists make the right decisions. Thank you for your contribution.



Anti-Cysteine protease ATG4A ATG4A Antibody