

Anti-GluR4 GRM4 Antibody

Catalog Number: A06552

About GRM4

G-protein coupled receptor for glutamate. Ligand binding causes a conformation change that triggers signaling via guanine nucleotide-binding proteins (G proteins) and modulates the activity of down-stream effectors. Signaling inhibits adenylate cyclase activity.

Susana Santos Correia, J. Biol. Chem., Feb 2003; 278: 6307 - 6313.

Maxim Mokin, J Neurophysiol, Jan 2006; 95: 215 - 224.

Maxim Mokin, J Neurophysiol, Jan 2006; 95: 215 - 224.

Peyman Golshani, PNAS, Mar 2001; 98: 4172.

Overview

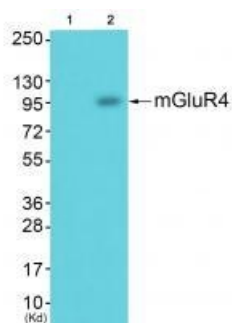
Product Name	Anti-GluR4 GRM4 Antibody
Reactive Species	Human, Mouse, Rat
Description	Boster Bio Anti-GluR4 GRM4 Antibody (Catalog # A06552). Tested in WB, IHC applications. This antibody reacts with Human, Mouse, Rat.
Application	IHC, WB
Clonality	Polyclonal
Formulation	Rabbit IgG in phosphate buffered saline (without Mg ²⁺ and Ca ²⁺), pH 7.4, 150mM NaCl, 0.02% sodium azide and 50% glycerol.
Storage Instructions	Store at -20°C for one year. For short term storage and frequent use, store at 4°C for up to one month. Avoid repeated freeze-thaw cycles.
Host	Rabbit
Uniprot ID	Q14833

Technical Details

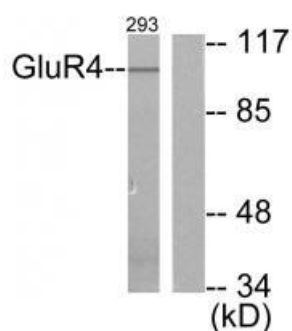
Immunogen	Synthesized peptide derived from human GluR4.
Predicted Reactive Species	Chimpanzee, Drosophila, Macaque
Cross Reactivity	No cross reactivity with other proteins.
Isotype	IgG
Form	Liquid
Concentration	1 mg/ml

Purification	The antibody was affinity-purified from rabbit antiserum by affinity-chromatography using epitope-specific immunogen.
Suggested Dilutions	<p>Dilute the sample so that the expected range of concentrations fall within the detection range of this kit.</p> <p>If the expected range of concentration is unknown, a pilot test should be conducted to decide the optimal dilution ratio for your samples.</p> <p>Some PubMed article(s) citing the expression level of this target are as follows:</p> <p>Boster Bio's internal QC testing used:</p> <p>Western blotting: 1:500~1:3000</p> <p>Immunohistochemistry: 1:50~1:100</p>

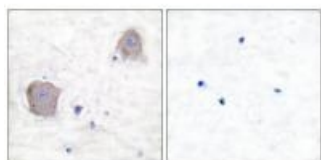
Anti-GluR4 GRM4 Antibody (A06552) Images



Western blot analysis of extracts from JK cells (Lane 2), using mGluR4 antibody A06552. The lane on the left is treated with synthesized peptide.



Western blot analysis of extracts from 293 cells, untreated or treated with Forskolin (40nM, 30mins), using GluR4 antibody A06552.



Immunohistochemical analysis of paraffin-embedded human brain tissue using GluR4 antibody A06552.

Submit a product review to Biocompare.com

Submit a review of this product to Biocompare.com to receive a \$20 Amazon.com giftcard! Your reviews help your fellow scientists make the right decisions. Thank you for your contribution.



Anti-GluR4 GRM4 Antibody