

## Anti-GluR8 GRM8 Antibody

Catalog Number: A06589

### About GRM8

G-protein coupled receptor for glutamate. Ligand binding causes a conformation change that triggers signaling via guanine nucleotide-binding proteins (G proteins) and modulates the activity of down-stream effectors, such as adenylate cyclase. Signaling inhibits adenylate cyclase activity.

Patrick. M. Downey, J Biomol Screen, Dec 2005; 10: 841 - 848.

RJ Wenthold, J. Biol. Chem., Jan 1994; 269: 1332 - 1339.

Toshiaki Watanabe, Cancer Res., Oct 2006; 66: 9804 - 9808.

V. Bruno, J. Neurosci., Sep 2000; 20: 6413.

### Overview

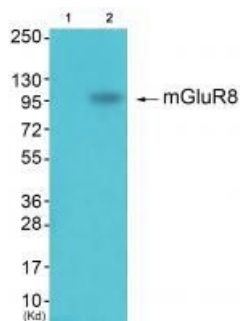
|                      |  |
|----------------------|--|
| Product Name         | Anti-GluR8 GRM8 Antibody   |
| Reactive Species     | Human, Mouse, Rat  |
| Description          | Boster Bio Anti-GluR8 GRM8 Antibody (Catalog # A06589). Tested in WB, IHC applications. This antibody reacts with Human, Mouse, Rat.               |
| Application          | IHC, WB  |
| Clonality            | Polyclonal   |
| Formulation          | Rabbit IgG in phosphate buffered saline (without Mg <sup>2+</sup> and Ca <sup>2+</sup> ), pH 7.4, 150mM NaCl, 0.02% sodium azide and 50% glycerol. |
| Storage Instructions | Store at -20°C for one year. For short term storage and frequent use, store at 4°C for up to one month. Avoid repeated freeze-thaw cycles.         |
| Host                 | Rabbit   |
| Uniprot ID           | O00222   |

### Technical Details

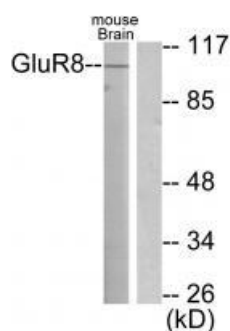
|                            |   |
|----------------------------|---|
| Immunogen                  | Synthesized peptide derived from human GluR8. |
| Predicted Reactive Species | Chimpanzee, Drosophila, Macaque               |
| Cross Reactivity           | No cross reactivity with other proteins.      |
| Isotype                    | IgG   |
| Form                       | Liquid  |
| Concentration              | 1 mg/ml                                       |

|                     |   |
|---------------------|---|
| Purification        | The antibody was affinity-purified from rabbit antiserum by affinity-chromatography using epitope-specific immunogen.   |
| Suggested Dilutions | <p>Dilute the sample so that the expected range of concentrations fall within the detection range of this kit.</p> <p>If the expected range of concentration is unknown, a pilot test should be conducted to decide the optimal dilution ratio for your samples.</p> <p>Some PubMed article(s) citing the expression level of this target are as follows:</p> <p>Boster Bio's internal QC testing used:</p> <p>Western blotting: 1:500~1:3000</p> <p>Immunohistochemistry: 1:50~1:100</p> |

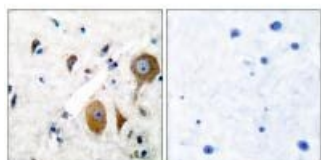
## Anti-GluR8 GRM8 Antibody (A06589) Images



Western blot analysis of extracts from k562 cells (Lane 2), using mGluR8 antibody A06589. The lane on the left is treated with synthesized peptide.



Western blot analysis of extracts from mouse brain, using GluR8 antibody A06589.



Immunohistochemical analysis of paraffin-embedded human brain tissue using GluR8 antibody A06589.

## Submit a product review to Biocompare.com

Submit a review of this product to Biocompare.com to receive a \$20 Amazon.com giftcard! Your reviews help your fellow scientists make the right decisions. Thank you for your contribution.



Anti-GluR8 GRM8 Antibody