

Anti-NEFM Antibody

Catalog Number: A06821

About NEFM

May play a role in the regulation of RhoA GTPase by guanine nucleotide-binding alpha-12 (GNA12) and alpha-13 (GNA13). Acts as guanine nucleotide exchange factor (GEF) for RhoA GTPase and may act as GTPase-activating protein (GAP) for GNA12 and GNA13.

Kourlas P.J., Proc. Natl. Acad. Sci. U.S.A. 97:2145-2150(2000).

The MGC Project Team, Genome Res. 14:2121-2127(2004).

Nagase T., DNA Res. 4:141-150(1997).

Overview

Product Name	Anti-NEFM Antibody
Reactive Species	Human, Mouse, Rat
Description	Boster Bio Anti-NEFM Antibody catalog # A06821. Tested in WB,ICC/IF,IHC,IP applications. This antibody reacts with Human,Mouse,Rat.
Application	IP, IF, IHC, ICC, WB
Clonality	Polyclonal
Formulation	Rabbit IgG, 1mg/ml in PBS with 0.02% sodium azide, 50% glycerol, pH7.2
Storage Instructions	Store at -20°C for one year. For short term storage and frequent use, store at 4°C for up to one month. Avoid repeated freeze-thaw cycles.
Host	Rabbit
Uniprot ID	P07197

Technical Details

Immunogen	Synthesized peptide derived from human STK25 protein.
Predicted Reactive Species	Chimpanzee, Drosophila, Macaque
Isotype	IgG
Form	Liquid
Concentration	1 mg/ml
Purification	ProA affinity purified
Suggested Dilutions	Dilute the sample so that the expected range of concentrations fall within the detection range of this

kit.

If the expected range of concentration is unknown, a pilot test should be conducted to decide the optimal dilution ratio for your samples.

Some PubMed article(s) citing the expression level of this target are as follows:

Boster Bio's internal QC testing used:

WB: 1:1,000-1:2,000

ICC: 1:100-1:500

IHC: 1:50-1:200

Anti-NEFM Antibody (A06821) Images

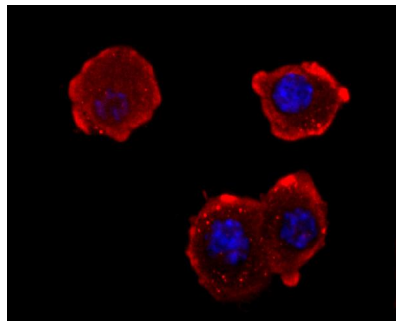


Figure 2. Immunocytochemistry staining of NEFM using Anti-NEFM Antibody (A06821).

ICC staining NEFM in N2A cells (red). The nuclear counter stain is DAPI (blue). Cells were fixed in paraformaldehyde

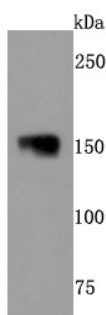


Figure 1. Western blotting validation for Anti-NEFM Antibody A06821

Western blot analysis of NEFM on 293T cells lysates using anti-NEFM antibody at 1/500 dilution. Electrophoresis was performed on a SDS-PAGE gel. To determine SDS-PAGE gel concentration

Submit a product review to Biocompare.com

Submit a review of this product to Biocompare.com to receive a \$20 Amazon.com giftcard! Your reviews help your fellow scientists make the right decisions. Thank you for your contribution.



Anti-NEFM Antibody