

## Anti-beta II tubulin TUBB2A Monoclonal Antibody

Catalog Number: A06868-1

### About TUBB2A

Appears to have a function in striated muscle development and regeneration.

### Overview

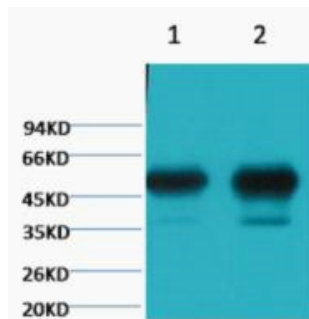
Product Name	Anti-beta II tubulin TUBB2A Monoclonal Antibody
Reactive Species	Mouse, Rat
Description	Boster Bio Anti-beta II tubulin TUBB2A Monoclonal Antibody catalog # A06868-1. Tested in IP, IHC, WB applications. This antibody reacts with Mouse, Rat.
Application	IP, IHC, WB
Clonality	Monoclonal Mix
Formulation	Liquid in PBS containing 50% glycerol, 0.5% BSA and 0.02% sodium azide.
Storage Instructions	Store at -20°C for one year. For short term storage and frequent use, store at 4°C for up to one month. Avoid repeated freeze-thaw cycles.
Host	Mouse
Uniprot ID	Q13885

### Technical Details

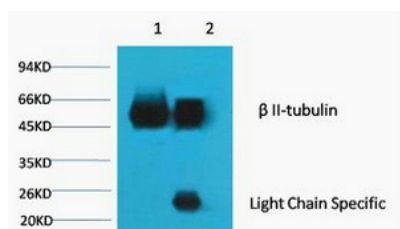
Immunogen	Synthetic Peptide
Predicted Reactive Species	Bovine, Canine, Equine, Guinea Pig, Pig, Rabbit
Isotype	IgG1
Form	Liquid
Concentration	This antibody's concentration is >0.5mg/ml.
Purification	Protein A purified
Suggested Dilutions	Dilute the sample so that the expected range of concentrations fall within the detection range of this kit. If the expected range of concentration is unknown, a pilot test should be conducted to decide the optimal dilution ratio for your samples. Some PubMed article(s) citing the expression level of this target are as follows: Boster Bio's internal QC testing used: WB, 1:50000-100000 IP, 0.18055555555555556



## Anti-beta II tubulin TUBB2A Monoclonal Antibody (A06868-1) Images



Western Blot (WB) analysis of 1) Mouse Brain tissue, 2) Rat Brain tissue, diluted at 1:100000.



Immunoprecipitation (IP) analysis: 1) Input: Mouse Brain Tissue Lysate.

### Submit a product review to Biocompare.com

Submit a review of this product to Biocompare.com to receive a \$20 Amazon.com giftcard! Your reviews help your fellow scientists make the right decisions. Thank you for your contribution.



Anti-beta II tubulin TUBB2A Monoclonal Antibody