

Anti-Kinase suppressor of Ras 2 KSR2 Antibody

Catalog Number: A06876

About KSR2

Location-regulated scaffold connecting MEK to RAF. Has very low protein kinase activity and can phosphorylate MAP2K1 at several Ser and Thr residues with very low efficiency (in vitro). Interaction with BRAF enhances KSR2-mediated phosphorylation of MAP2K1 (in vitro). Blocks MAP3K8 kinase activity and MAP3K8-mediated signaling. Acts as a negative regulator of MAP3K3-mediated activation of ERK, JNK and NF-kappa-B pathways, inhibiting MAP3K3-mediated interleukin-8 production.

Ota T., Nat. Genet. 36:40-45(2004).

Scherer S.E., Nature 440:346-351(2006).

Channavajhala P.L., J. Biol. Chem. 278:47089-47097(2003).

Overview

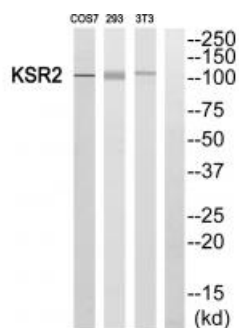
Product Name	Anti-Kinase suppressor of Ras 2 KSR2 Antibody
Reactive Species	Human, Mouse
Description	Boster Bio Anti-Kinase suppressor of Ras 2 KSR2 Antibody (Catalog # A06876). Tested in WB, IF applications. This antibody reacts with Human, Mouse.
Application	IF, WB
Clonality	Polyclonal
Formulation	Rabbit IgG in phosphate buffered saline (without Mg ²⁺ and Ca ²⁺), pH 7.4, 150mM NaCl, 0.02% sodium azide and 50% glycerol.
Storage Instructions	Store at -20°C for one year. For short term storage and frequent use, store at 4°C for up to one month. Avoid repeated freeze-thaw cycles.
Host	Rabbit
Uniprot ID	Q6VAB6

Technical Details

Immunogen	Synthesized peptide derived from internal of human KSR2.
Predicted Reactive Species	Chimpanzee, Drosophila, Macaque
Isotype	IgG
Form	Liquid
Concentration	1 mg/ml

Purification	The antibody was affinity-purified from rabbit antiserum by affinity-chromatography using epitope-specific immunogen.
Suggested Dilutions	<p>Dilute the sample so that the expected range of concentrations fall within the detection range of this kit.</p> <p>If the expected range of concentration is unknown, a pilot test should be conducted to decide the optimal dilution ratio for your samples.</p> <p>Some PubMed article(s) citing the expression level of this target are as follows:</p> <p>Boster Bio's internal QC testing used:</p> <p>Western blotting: 1:500~1:3000</p> <p>Immunofluorescence: 1:100~1:500</p>

Anti-Kinase suppressor of Ras 2 KSR2 Antibody (A06876) Images



Western blot analysis of extracts from COS7, 293 and 3T3 cells, using KSR2 antibody A06876.



Immunofluorescence analysis of HeLa cells, using KSR2 antibody A06876.

Submit a product review to Biocompare.com

Submit a review of this product to Biocompare.com to receive a \$20 Amazon.com giftcard! Your reviews help your fellow scientists make the right decisions. Thank you for your contribution.



Anti-Kinase suppressor of Ras 2 KSR2 Antibody