

Anti-Bone morphogenetic protein 10 BMP10 Antibody

Catalog Number: A06968

About BMP10

Required for maintaining the proliferative activity of embryonic cardiomyocytes by preventing premature activation of the negative cell cycle regulator CDKN1C/p57KIP and maintaining the required expression levels of cardiogenic factors such as MEF2C and NKX2-5. Acts as a ligand for ACVRL1/ALK1, BMPR1A/ALK3 and BMPR1B/ALK6, leading to activation of SMAD1, SMAD5 and SMAD8 transcription factors. Inhibits endothelial cell migration and growth. May reduce cell migration and cell matrix adhesion in breast cancer cell lines.

Celeste A.J., Submitted (OCT-1998) to the EMBL/GenBank/DDBJ databases.

Hillier L.W., Nature 434:724-731(2005).

Mazerbourg S., J. Biol. Chem. 280:32122-32132(2005).

Overview

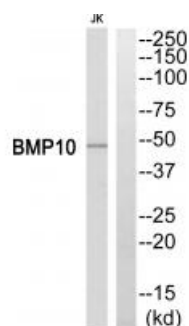
Product Name	Anti-Bone morphogenetic protein 10 BMP10 Antibody
Reactive Species	Human
Description	Boster Bio Anti-Bone morphogenetic protein 10 BMP10 Antibody (Catalog # A06968). Tested in WB applications. This antibody reacts with Human.
Application	WB
Clonality	Polyclonal
Formulation	Rabbit IgG in phosphate buffered saline (without Mg ²⁺ and Ca ²⁺), pH 7.4, 150mM NaCl, 0.02% sodium azide and 50% glycerol.
Storage Instructions	Store at -20°C for one year. For short term storage and frequent use, store at 4°C for up to one month. Avoid repeated freeze-thaw cycles.
Host	Rabbit
Uniprot ID	O95393

Technical Details

Immunogen	Synthesized peptide derived from Internal of human BMP10.
Predicted Reactive Species	Chimpanzee, Drosophila, Macaque
Isotype	IgG
Form	Liquid
Concentration	1 mg/ml

Purification	The antibody was affinity-purified from rabbit antiserum by affinity-chromatography using epitope-specific immunogen.
Suggested Dilutions	<p>Dilute the sample so that the expected range of concentrations fall within the detection range of this kit.</p> <p>If the expected range of concentration is unknown, a pilot test should be conducted to decide the optimal dilution ratio for your samples.</p> <p>Some PubMed article(s) citing the expression level of this target are as follows:</p> <p>Boster Bio's internal QC testing used:</p> <p>Western blotting: 1:500~1:3000</p>

Anti-Bone morphogenetic protein 10 BMP10 Antibody (A06968) Images



Western blot analysis of extracts from Jurkat cells, using BMP10 antibody A06968.

Submit a product review to Biocompare.com

Submit a review of this product to Biocompare.com to receive a \$20 Amazon.com giftcard! Your reviews help your fellow scientists make the right decisions. Thank you for your contribution.



Anti-Bone morphogenetic protein 10 BMP10 Antibody