

## Anti-RPL30/Ribosomal Protein L30 Antibody

Catalog Number: A06994

### About RPL30

Ribosomes, the organelles that catalyze protein synthesis, consist of a small 40S subunit and a large 60S subunit. Together these subunits are composed of 4 RNA species and approximately 80 structurally distinct proteins. This gene encodes a ribosomal protein that is a component of the 60S subunit. The protein belongs to the L30E family of ribosomal proteins. It is located in the cytoplasm. This gene is co-transcribed with the U72 small nucleolar RNA gene, which is located in its fourth intron. As is typical for genes encoding ribosomal proteins, there are multiple processed pseudogenes of this gene dispersed through the genome.

Beausoleil S.A., Nat. Biotechnol. 24:1285-1292(2006).

Yoshihama M., Genome Res. 12:379-390(2002).

The MGC Project Team; Genome Res. 14:2121-2127(2004).

### Overview

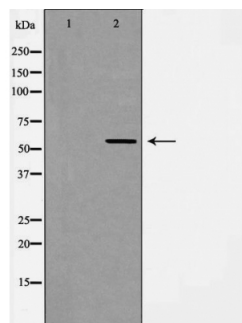
Product Name	Anti-RPL30/Ribosomal Protein L30 Antibody
Reactive Species	Human, Mouse, Rat
Description	Boster Bio Anti-RPL30/Ribosomal Protein L30 Antibody (Catalog # A06994). Tested in WB, IHC applications. This antibody reacts with Human, Mouse, Rat.
Application	IHC, WB
Clonality	Polyclonal
Formulation	Rabbit IgG in phosphate buffered saline, pH 7.4, 150mM NaCl, 0.02% sodium azide and 50% glycerol.
Storage Instructions	Store at -20°C for one year. For short term storage and frequent use, store at 4°C for up to one month. Avoid repeated freeze-thaw cycles.
Host	Rabbit
Uniprot ID	P62888

### Technical Details

Immunogen	A synthesized peptide of human Angiopoietin 2
Predicted Reactive Species	Chimpanzee, Drosophila, Macaque
Isotype	IgG
Form	Liquid
Concentration	1 mg/ml

Purification	The antibody was affinity-purified from rabbit antiserum by affinity-chromatography using epitope-specific immunogen.
Suggested Dilutions	<p>Dilute the sample so that the expected range of concentrations fall within the detection range of this kit.</p> <p>If the expected range of concentration is unknown, a pilot test should be conducted to decide the optimal dilution ratio for your samples.</p> <p>Some PubMed article(s) citing the expression level of this target are as follows:</p> <p>Boster Bio's internal QC testing used:</p> <p>Western blotting: 1:500~1:3000</p> <p>Immunohistochemistry: 1:50~1:100</p>

## Anti-RPL30/Ribosomal Protein L30 Antibody (A06994) Images



Western blot analysis of ANG 2 expression in HUVEC cell lysate. The lane on the left is treated with the antigen-specific peptide.

### Submit a product review to Biocompare.com

Submit a review of this product to Biocompare.com to receive a \$20 Amazon.com giftcard! Your reviews help your fellow scientists make the right decisions. Thank you for your contribution.



Anti-RPL30/Ribosomal Protein L30 Antibody