

Anti-MAP4K3/Glk Antibody

Catalog Number: A07188

About MAP4K3

May play a role in the response to environmental stress. Appears to act upstream of the JUN N-terminal pathway.

Diener K., Proc. Natl. Acad. Sci. U.S.A. 94:9687-9692(1997).

Gorry M.C., Submitted (NOV-2001) to the EMBL/GenBank/DDBJ databases.

Edwards J., Submitted (JUN-1999) to the EMBL/GenBank/DDBJ databases.

Overview

Product Name	Anti-MAP4K3/Glk Antibody
Reactive Species	Human, Mouse, Rat
Description	Boster Bio Anti-MAP4K3/Glk Antibody (Catalog # A07188). Tested in WB applications. This antibody reacts with Human, Mouse, Rat.
Application	WB
Clonality	Polyclonal
Formulation	Rabbit IgG in phosphate buffered saline (without Mg ²⁺ and Ca ²⁺), pH 7.4, 150mM NaCl, 0.02% sodium azide and 50% glycerol.
Storage Instructions	Store at -20°C for one year. For short term storage and frequent use, store at 4°C for up to one month. Avoid repeated freeze-thaw cycles.
Host	Rabbit
Uniprot ID	Q8IVH8

Technical Details

Immunogen	Synthesized peptide derived from N-terminal of human MAP4K3.
Predicted Reactive Species	Chimpanzee, Drosophila, Macaque
Isotype	IgG
Form	Liquid
Concentration	1 mg/ml
Purification	The antibody was affinity-purified from rabbit antiserum by affinity-chromatography using epitope-specific immunogen.
Suggested Dilutions	Dilute the sample so that the expected range of concentrations fall within the detection range of this

kit.

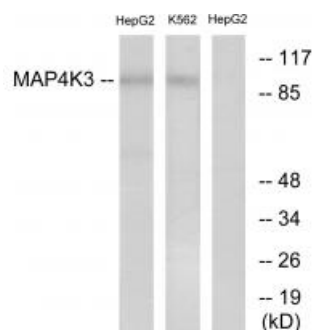
If the expected range of concentration is unknown, a pilot test should be conducted to decide the optimal dilution ratio for your samples.

Some PubMed article(s) citing the expression level of this target are as follows:

Boster Bio's internal QC testing used:

Western blotting: 1:500~1:3000

Anti-MAP4K3/Glk Antibody (A07188) Images



Western blot analysis of extracts from HepG2 cells and K562 cells, using MAP4K3 antibody A07188.

Submit a product review to Biocompare.com

Submit a review of this product to Biocompare.com to receive a \$20 Amazon.com giftcard! Your reviews help your fellow scientists make the right decisions. Thank you for your contribution.



Anti-MAP4K3/Glk Antibody